

# GLEBE MATTERS

## Principal's Address

Dear Parents and Carers,

It has been a busy week of learning, connection, and fun at Glebe Public School as we make our way to the end of the 2021 school year.

### Today is International Day of People with Disability (IDPWD)

IDPWD is a United Nations observed day celebrated internationally. It aims to increase public awareness, understanding and acceptance of people with a disability and celebrate their achievements and contributions. One of the things that I am most proud of about our school is how we provide an inclusive and supportive environment for our students and community. Today, like all days, we acknowledge and support those members of our school community who may have a disability and celebrate them for the contributions that they make to our school and community.

### Headstart Transition to School Program

It was wonderful to welcome our second group of Kindergarten students this week and have them participate in our Headstart transition program. Although our 2021 transition program was a shorter version than in previous years due to COVID, providing our future students a positive start to school is vital and it was wonderful to see them learning about the school routines, meeting our staff, and making new friends.

### Term 4 End Date and Term 1 2022 Start Dates

- Term 4 concludes on Thursday 16 December 2021.
- Students in Kindergarten will commence on Monday 7 February 2022. From Tuesday 1 - Friday 4 February students in Kindergarten will undertake their Best Start assessment and information for Kindergarten parents regarding this assessment will be provided over the coming weeks.
- Students in Years 1 - Year 6 will return on Tuesday 1 February
- A full overview of the 2022 term dates is available by clicking [here](#).

Have a restful weekend and if there is anything we can do to support you and your family over the coming weeks, please do not hesitate to let us know.

Bryce Walker  
Principal

[bryce.walker@det.nsw.edu.au](mailto:bryce.walker@det.nsw.edu.au)



**P&C Christmas Drinks!**  
Forest Lodge Hotel,  
Tuesday 14 December 7  
PM. RSVP to  
[verity.firth@gmail.com](mailto:verity.firth@gmail.com)

# HEADSTART



This week we had our second group of students for Headstart. All students were eager to attend and meet their new peers that may be in their class next year. It was a great two days and the experience of becoming familiar with the school environment, their next year's teachers and with different pieces of information to help them start school with confidence. Please be available for the 2022 Kindergarten Q&A zoom session next Wednesday afternoon, 8th December, from 3:30pm. Details have been given to each of you in the pack your child received in their new Library and excursion bag. We look forward to greeting your children next year as our new Kindergarteners.

Ms Annie O'Keeffe

## Ethics Volunteer Callout

We need volunteers to provide ethics classes in 2022 for all families requesting ethics for their children!  
Could you be a volunteer ethics teacher for Glebe Public School?

Teachers receive full training by Primary Ethics, the not-for-profit organisation approved to design curriculum and run the ethics program.

One time training commitment - two-day workshop and approx 4 hours online training.

Weekly commitment - classes 2.30-3.00pm each Monday afternoon.

All lesson materials are provided.

In ethics classes, children learn how to think logically, disagree respectfully and support their arguments with evidence, rather than act according to blind habit or peer pressure.

Children discuss topic such as:

- imagining how others feel
- how do we treat living things?
- what is laziness?
- how do we disagree in a respectful way?
- fairness

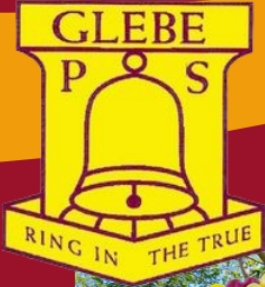
If you are interested in volunteering or want to learn more, please visit [www.primaryethics.com.au](http://www.primaryethics.com.au) or contact Kait Gotham (mum to Gabriel K and Asher Yr3) on 0409 459 057 or [kaitgotham@hotmail.com](mailto:kaitgotham@hotmail.com).



GLEBE PUBLIC SCHOOL

# PRESENTATION DAY

FRIDAY 10TH DECEMBER



*Join us Live*

CELEBRATE 2021 WITH  
OUR SCHOOL COMMUNITY

## ZOOM DETAILS

Check your emails or  
contact the office.

10:45 AM *Zoom Opens*

11:25 AM **K-2 Awards**

**3-6 Awards**

**Major Awards**

1:15 PM *Estimated Finish*



A decorative border of various tropical leaves in green, yellow, and blue surrounds a central dark green circle containing text.

# GLEBE P&C PARTY

**TUES 14.12.21**

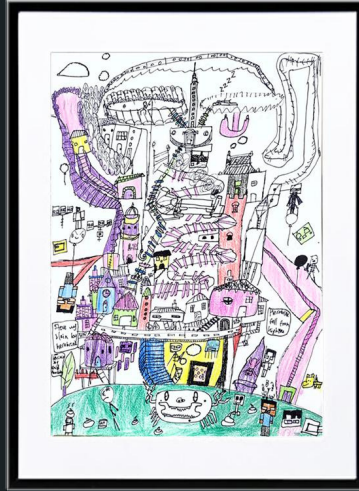
All welcome!  
Toxteth Hotel - 7.00pm  
Dinner and drinks at own cost  
**(Or just drop by!)**

If you are staying for dinner please  
RSVP to [verity.firth@gmail.com](mailto:verity.firth@gmail.com)  
0419 140 261  
By Fri 10/12



Sydney Visual Arts Academy

# Art Exhibition



Tuesday 14th-Saturday 18th December

Opening Night: 14th Dec 5-7pm

Refreshments provided. All welcome.

SVAA, 196/392 JONE ST, ULTIMO

[www.sydneyvisualartsacademy.com](http://www.sydneyvisualartsacademy.com)

## School Holiday Art Workshops!



More details can be found at:

[www.sydneyvisualartsacademy.com](http://www.sydneyvisualartsacademy.com)



Sydney Visual Arts Academy





# Calendar 2022



January

S	M	T	W	T	F	S
30	31				1	
2	3	4	5	6	7	8
9	10	11	12	13	14	15
16	17	18	19	20	21	22
23	24	25	26	27	28	29

February

S	M	T	W	T	F	S
		1	2	3	4	5
6	7	8	9	10	11	12
13	14	15	16	17	18	19
20	21	22	23	24	25	26
27	28					

March

S	M	T	W	T	F	S
		1	2	3	4	5
6	7	8	9	10	11	12
13	14	15	16	17	18	19
20	21	22	23	24	25	26
27	28	29	30	31		

April

S	M	T	W	T	F	S
					1	2
3	4	5	6	7	8	9
10	11	12	13	14	15	16
17	18	19	20	21	22	23
24	25	26	27	28	29	30

May

S	M	T	W	T	F	S
1	2	3	4	5	6	7
8	9	10	11	12	13	14
15	16	17	18	19	20	21
22	23	24	25	26	27	28
29	30	31				

June

S	M	T	W	T	F	S
			1	2	3	4
5	6	7	8	9	10	11
12	13	14	15	16	17	18
19	20	21	22	23	24	25
26	27	28	29	30		

July

S	M	T	W	T	F	S
31					1	2
3	4	5	6	7	8	9
10	11	12	13	14	15	16
17	18	19	20	21	22	23
24	25	26	27	28	29	30

August

S	M	T	W	T	F	S
	1	2	3	4	5	6
7	8	9	10	11	12	13
14	15	16	17	18	19	20
21	22	23	24	25	26	27
28	29	30	31			

September

S	M	T	W	T	F	S
				1	2	3
4	5	6	7	8	9	10
11	12	13	14	15	16	17
18	19	20	21	22	23	24
25	26	27	28	29	30	

October

S	M	T	W	T	F	S
30	31					1
2	3	4	5	6	7	8
9	10	11	12	13	14	15
16	17	18	19	20	21	22
23	24	25	26	27	28	29

November

S	M	T	W	T	F	S
		1	2	3	4	5
6	7	8	9	10	11	12
13	14	15	16	17	18	19
20	21	22	23	24	25	26
27	28	29	30			

December

S	M	T	W	T	F	S
					1	2
3	4	5	6	7	8	9
10	11	12	13	14	15	16
17	18	19	20	21	22	23
24	25	26	27	28	29	30
31						

## Key dates

- Term start and end dates\***
  - Term 1 (Eastern) – 28 Jan to 8 Apr 2022
  - Term 1 (Western) – 4 Feb to 8 Apr 2022
  - Term 2 – 26 Apr to 1 July 2022
  - Term 3 – 18 July to 23 Sept 2022
  - Term 4 – 10 Oct to 20 Dec 2022
- School development days**
  - Term 1 (Eastern) – 28 Jan and 31 Jan 2022
  - Term 1 (Western) – 4 Feb and 7 Feb 2022
  - Term 2, 3 and 4 – 26 April, 18 July and 20 Dec 2022
- School vacation dates 2022**
  - Summer (Eastern) – 20 Dec 2021 to 27 Jan 2022
  - Summer (Western) – 20 Dec 2021 to 3 Feb 2022
  - Autumn – 11 Apr to 22 Apr 2022
  - Winter – 4 July to 15 July 2022
  - Spring – 26 Sept to 7 Oct 2022
  - Summer (Eastern) – 21 Dec 2022 to 26 Jan 2023
  - Summer (Western) – 21 Dec 2022 to 2 Feb 2023
- Education Week**
  - 1-5 August 2022
- Exam dates**
  - Selective high school placement test – 10 Mar 2022
  - NAPLAN online test window – 10 to 20 May 2022
  - Opportunity class placement test – 28 July 2022
- Public holidays**



## Scan me for practical school tips!

To help your child get the most out of their school year and to explore our resources, check out our back to school hub at [education.nsw.gov.au/back-to-school](https://education.nsw.gov.au/back-to-school)

School zone speed limits apply on all school days, including school development days.



\* Check with your school as starting and finishing dates may change.