

# GLEBE MATTERS

## Principal's Address

Dear Glebe community,

As we come to the end of Term 1, I want to thank you all for your ongoing support and understanding over the past 11 weeks. I also want to recognise our amazing students who have shown resilience, enthusiasm, and dedication throughout Term 1.

It has been an incredibly busy term as we implement new initiatives across the school, explore opportunities to ensure our students are engaged and active learners, and maintain our commitment to work in partnership with our school community to provide a quality education in a caring environment.

It goes without saying that the continued impacts of COVID-19 have been present for us all; however, I am proud of how we, as a school and community, have been diligent in ensuring that everyone remains as safe as possible during this time. This is a true testament to the strong community, which is Glebe through and through.

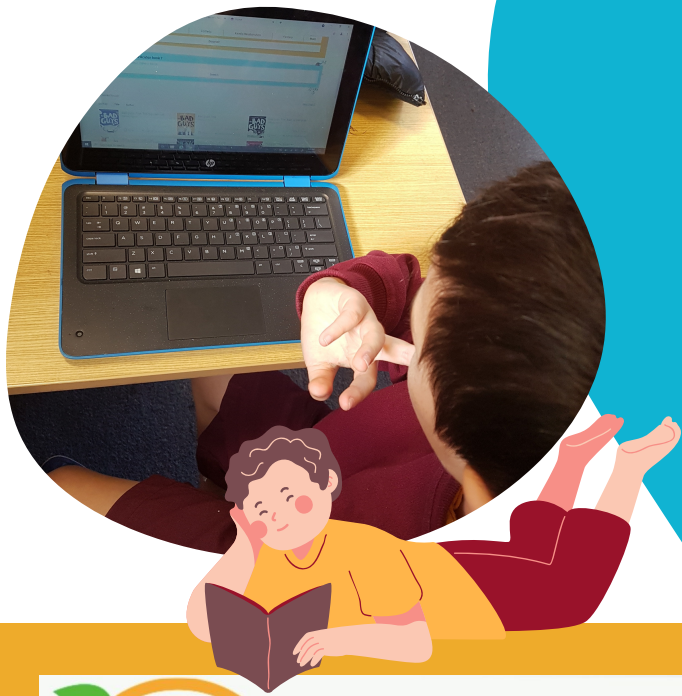
I would like to take this opportunity to acknowledge and commend the Glebe Public School staff for their unwavering hard work and dedication throughout the term. Every single staff member undertakes an invaluable role within the school and is part of a team that is incredibly supportive and collegial. Thank you!

I wish you all a safe and restful holiday break and look forward to seeing you for the start of Term 2.

Bryce Walker  
Principal  
bryce.walker@det.nsw.edu.au



# THE PREMIER'S READING CHALLENGE



The Premier's Reading Challenge is open! With a wet weather holiday forecast, now is a great time to get reading and update your Premier's Reading Challenge (PRC) Student Reading Record.

Students in K-2 share 30 books, students in Years 3 - 6 read 20 books. Five of these books can be your own choice, the rest must come from the PRC grade level book lists.

Students access their reading record through the DET student portal using their DET log on details. Students in Years 3 - 6 have been shown how to access, search for and add books to their reading record.

You must complete your online Student Reading Record by 19 August 2022 (11:59 pm) to complete the Challenge.

For more information, full book lists and rules, please go to the PRC website [here](#).



**Glebe  
TreeHouse**

A fun, free family space where little things can grow

Schools as Community Centre, 0409 835 754

[glebetreehouse@gmail.com](mailto:glebetreehouse@gmail.com)

**Term 2 2022**

## MONDAY

### Story Time

9:30 am - 10:30am

Stories & games at Glebe School Library (next to TreeHouse)  
For families with kids 0 - 5 years.



### MyTime Group

10 am - 12 pm

A group for parents and carers with children who have a disability.  
Free child care, activities and more.

## TUESDAY

### Glebe Playgroup

10 am - 12 pm



A friendly supported playgroup for Glebe families with children 0 - 5 years.

### Family Workers

Because parenting is a tough gig. Family workers are available through TreeHouse for any issue big or small.  
Contact us.

## WEDNESDAY



### Bilingual Playgroup

10:30 am - 12:30 pm

For families who speak more than one language.  
Kids 0 - 5 years

### Speech Pathology

Speech Therapy students from the University of Sydney providing free language support and advice to Glebe kids.

BLAH BLAH BLAH

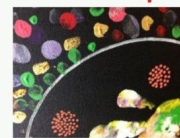
## THURSDAY

### Ngara Nanga

Mai

### Aboriginal Playgroup

10 am - 1 pm



Yarn - Play - Eat  
0419 846 485

### Community Greening

1 pm - 3:30 pm

For school-aged kids at Glebe Public School.  
In partnership with Royal Botanic Gardens.

## FRIDAY

### BABY GROUP

10 am - 11:30 am

A group for parents and carers and, their babies (0 - 12 mths)



### IDEAS?

Have an idea that will benefit local families?  
We'd love to hear it!  
Contact TreeHouse.



| NSW Department of Education

# 2022 NSW Premier's Reading Challenge

Start reading now!

  
**Key dates  
for students  
in K-10:**

Challenge opens  
Monday 28 February

Challenge closes for  
student entries  
Friday 19 August

Artwork by Stephen Michael King

[www.premiersreadingchallenge.nsw.edu.au](http://www.premiersreadingchallenge.nsw.edu.au)



# Uniform Shop

TERM 2



## WHEN

Every Wednesday  
Morning

## WHERE

Office Building

## TIME

8:30am-9:30am



## HOW TO PAY?

Pay online via our website using the 'Make a Payment' option to pay-ahead.  
OR pay VIA EFTPOS or with exact cash on the day of purchase.

*Please note, we DO NOT carry change, so please bring the exact cash amount. Prices can be found on our price list, thank you.*



# Autumn Vacation Care 2022

Hours of Operation: 8:00am-5:00pm

## \$500 Centipede Voucher

Glebe families can now claim a 500 dollar voucher per child to go towards fees for before school care, after school care or vacation care at Centipede.

You will need to claim this voucher through the Service NSW app or website. Once you have received it you can email it to [centipede.glebe@yahoo.com.au](mailto:centipede.glebe@yahoo.com.au) or show the code to Keryn at Centipede.

If you need any help applying please drop by Centipede, we are very happy to help!

We would love to see existing families along with new families take advantage of this great offer.

<b>Monday 11<sup>th</sup></b> Incursion  <b>Go Karts</b>  Ready, set, go! We will be zooming around Centipede on Go Karts and having a fun first day of the holidays.	<b>Tuesday 12<sup>th</sup></b> Excursion  <b>Eco Walk Excursion</b>  We are exploring in the bushland today looking for bugs, beetles spiders and nature. Depart: 9:30am Return: 3:30pm	<b>Wednesday 13<sup>th</sup></b> Incursion  <b>Laser Tag</b>  Come ready to be challenged! Start planning strategies for your Laser Tag team now. Quieter activities will be available throughout the day.	<b>Thursday 14<sup>th</sup></b> Excursion  <b>Pizza in the Park</b>  Today we are heading to Foley Park to play and to have some pizza. Depart: 11am Return: 3pm	<b>Friday 15<sup>th</sup></b> Centre Closed  <b>Good Friday</b> <b>Centipede Closed</b>
<b>Monday 18<sup>th</sup></b> Centre Closed  <b>Easter Monday</b> <b>Centipede Closed</b>	<b>Tuesday 19<sup>th</sup></b> Excursion  <b>Glebe Youth Service Monkey Mania</b>  Years 4-6 are off to Glebe Youth Service for the day. Years K-3 are off to Monkey Mania for a fun day of play. Depart: 10am Return: 3pm	<b>Wednesday 20<sup>th</sup></b> Incursion  <b>Wheelchair Basketball</b>  Back by popular demand our friends at Wheelchair Sports NSW are visiting to teach us about inclusive sports and to play basketball.	<b>Thursday 21<sup>st</sup></b> Excursion  <b>Clifton Gardens</b>  We are going to Clifton gardens today for a play and explore in nature. Depart: 10am Return: 3pm	<b>Friday 22<sup>nd</sup></b> In Centre  <b>Earth Day</b>  Centipede will be celebrating Earth day with sustainable crafts and activities.
<b>Monday 25<sup>th</sup></b> Centre Closed  <b>Anzac Day</b> <b>Centipede Closed</b>	<b>Tuesday 26<sup>th</sup></b> Centre Closed  <b>Staff Development Day</b> <b>Centipede Closed</b>	<b>Vacation Care Opening Hours: 8:00am – 5:00pm</b> <b>Please bring along a hat and water. Lunch and snacks are all provided.</b>  If you have any questions or concerns regarding payment, please speak to Keryn <b>Daily Fee: \$65</b>  Fees can be paid to Centipede by <b>direct debit or internet banking</b>  <b>Bank:</b> Commonwealth Bank <b>BSB:</b> 062172 <b>Account number:</b> 10239391  Please leave each child's initials in the account description.  <b>We kindly request children do not bring money to Centipede.</b>		

# WHAT IS ON AT GLEBE NEXT TERM?



## After School Soccer Glebe Public School

FUN - EDUCATIONAL - ACTIVE

Starting in Term 2, Soccer X will be running an 8 week After School Soccer program at Glebe Public School every Wednesday from 3:10-4:10pm beginning 11th May. The program is available to students from Kindergarten - Yr 6. Children will be split into groups according to age. All sessions will be run by qualified coaches who hold WWCC. The sessions will be fully inclusive & fun based, catering for all abilities.

**Active Kids Vouchers accepted.**

**Cost: \$120 (8weeks)**

For more information and online registrations please visit [WWW.SOCCER-X.COM](http://WWW.SOCCER-X.COM)

## After School Art

@Glebe Public School

Enrolling now  
for Term 2!

Art classes for Years 3 to 6  
Thursdays 3pm to 4:30pm

Classes run at school  
All materials provided  
Painting, drawing,  
printmaking, sculpture  
and more!

Creative Kids voucher accepted

Please Contact:

Catriona Secker: [cat.secker@outlook.com](mailto:cat.secker@outlook.com) 0404 677 245

[www.arty-cats.com](http://www.arty-cats.com)



## After-school has never been so much fun!

Get creative using design, code and logic  
to build your own games!



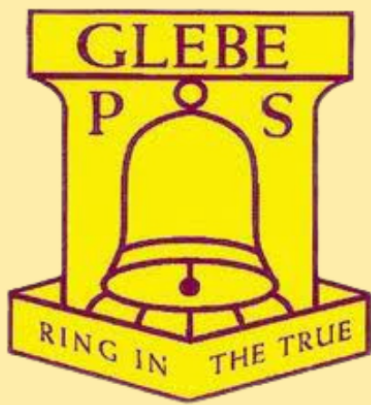
Book now at [codecamp.com.au/glebeps](http://codecamp.com.au/glebeps)

Give us a call on **1300 263 322**

Rated **4.9** on [PRODUCTREVIEW.COM.AU](http://PRODUCTREVIEW.COM.AU) with over 746 ★★★★★ reviews



CLAIM YOUR  
\$100 REBATE



# Full Uniform Price List

## Summer Uniform

Short sleeve polo 4-12	\$18
Short sleeve polo 14-20	\$20
Shorts	\$18
Long pants	\$22
Summer dress	\$40
Skorts	\$20



## Winter Uniform

Winter tunic	\$42
Long sleeve shirt 4-12	\$20
Long sleeve shirt 14-20	\$22
Tracksuit pants	\$20
Jumper	\$22
Fleece Zip Jacket	\$24

## Accessories

Bucket/Baseball Hat	\$8
Wide brimmed hat	\$10
School backpack	\$34
Library bag	\$10



Pay online via our website using the 'Make a Payment' option to pay ahead.  
Any questions please email the office at [glebe-p.school@det.nsw.edu.au](mailto:glebe-p.school@det.nsw.edu.au)