

# GLEBE MATTERS

## Principal's Address

Dear Parents and Families

Welcome back to Glebe Public School for Term One, 2023! We welcome our new families joining the school this year and our Kindergarten class of 2023 who will officially start on Monday 6 February.

It has been a pleasure to start the year as Relieving Principal this week while Mr. Walker is on leave. The Leadership Team are working collaboratively to maintain consistent whole school processes and procedures, and to support staff and students in having a positive and well organised start to the year. We look forward to seeing Mr. Walker in Week Four.

The staffroom has been abuzz with teachers excited to be back and starting the new school year. We welcome our new staff members - Mr Todd Mackie, Miss Phyllis Bird, Mrs Bernadette Boehm and Miss Madison Woodward. Ms Caitlin Walsh and Ms Helen Michael return from leave this term.

Students started the term with a focus on literacy and numeracy, developing classroom expectations and routines, and getting to know each other in their new classes. Early Stage One and Stage One classes will start engaging with new K - 2 English and Mathematics syllabus content this term.

Thank you all for your ongoing support over the past week as we have returned to the routines of Term One. It has been a delight to speak to parents and families and hear about the happy stories your children are sharing about their new classes and class teachers. Glebe Public School is a great place to be!

Have a restful weekend and if there is anything we can do to support you and your family over the coming weeks, please do not hesitate to let us know.

Jessamy Rush  
Rel/Principal  
[jessamy.rush@det.nsw.edu.au](mailto:jessamy.rush@det.nsw.edu.au)



A teacher is on duty from 8:30am. If students arrive before this time, arrangements can be made with Centipede.



The Swimming Carnival will be held on Friday the 17th of February. Permission slips have been sent home with students.



Strictly no dogs are permitted to be on school grounds, including the car park

# NEWS AND EVENTS

## Markets At Glebe Public School

Glebe Public School believes that schools are at the centre of our communities. The NSW Department of Education supports markets on school sites given they are community assets. The markets have been a mainstay at Glebe Public School for more than 30 years and play an important role in bringing the school and wider Glebe community together.

The Department has no plans to close the markets at Glebe Public School.

The Department and the City of Sydney are working together to find an interim solution to keep the markets operating now that the current operator has indicated they will not continue.

Planning is also underway to tender for an ongoing operator of the markets at Glebe Public School. If you have any queries relating to these processes please contact the Department of Education at [schoolinfrastructure@det.nsw.edu.au](mailto:schoolinfrastructure@det.nsw.edu.au).

## Names on Belongings

Please ensure that your child has their name clearly marked on their belongings such as hats, jumpers, drink bottles, and lunch boxes/containers. This makes it much easier for them to be returned should they be lost or misplaced.

## PBL: Positive Behaviour for Learning

Positive Behaviour for Learning (PBL) is an evidence-based framework that brings together the whole-school community to contribute to developing a positive, safe and supportive learning culture. At Glebe Public School our PBL expectations are:

- Be Safe
- Be Respectful
- Be a Learner.

Each week staff and students focus on one setting in the school and engage in lessons that teach the expected behaviours in that setting. This week our whole school focus is classroom settings.

Be Safe	Be Respectful	Be a Learner.
Hands, feet and objects to yourself. Walk quietly, sensibly and safely. Be in the right place at the right time.	Use kind words. Follow staff instructions. Use equipment correctly. Include others.	Try your best. Stay in the learning area. Ignore distractions.

## GLEBE PUBLIC SCHOOL

Gadigal Land | Eora Nation



## JARJUMS

### TERM 1

When: Wednesday lunch times

Where: Winangay (old Grevilla classroom)

Start date: Week 2



- ALL WELCOME TO -

## Glebe Public School BREAKFAST CLUB

STARTING BACK MONDAY 6TH FEB!

**WHEN** All Weekdays  
8:30am-9:00am  
**LOCATION** Canteen  
**MENU** Toast, fruit etc.  
**COST** Free of charge

9660 4549 | If you would like to volunteer your time to help with the Breakfast Club, please call Miss Ryan



# STAFFING TERM ONE 2023

EXECUTIVE	
Bryce Walker	Principal
Rondelle Ryan	Deputy Principal Instructional Leader: Aboriginal Education
Jessamy Rush	Assistant Principal Curriculum and Instruction K-2
Todd Mackie	Assistant Principal Curriculum and Instruction 3-6
Karissa Pedron	Assistant Principal Stage 2
Kane Wheatley	Assistant Principal Stage 3, Music RFF, IT, Admin
Dominique Chedel	Assistant Principal Learning Support (Monday -Tuesday)
SUPPORT STAFF/TEACHERS	
Aunty Wendy Buchanan	Aboriginal Education Officer (AEO)
TBC	EALD
Paula Callen	Teacher Librarian RFF (Monday - Thursday)
Helen Michael	Learning and Support Teacher (Wednesday - Friday)
Kate Hurst	School Counsellor (Wednesday)
Khiara Kengike	RFF (Monday - Thursday) Flame Tree (Friday)
CLASSROOM TEACHERS	
India Evans	Kindergarten - Kangaroo Paw Class
Phyllis Bird`	Kindergarten - Bunya Class
Kyol Blakeney	Year 1 - Banksia Class
Caitlin Walsh/Bernadette Boehm	Year 1 - Eucalyptus Class (Caitlin Monday - Wednesday) (Bernadette Thursday - Friday)
Rebecca Barnes	Year 2 - Waratah Class
Tobias Louch	Year 2 - Myrtle Class
Karissa Pedron	Year 3/4 - Lilly Pilly Class
Megan McCullough	Year 3/4 - Kurrajong Class
Marc Barthes	Year 3/4 - Paperbark Class
Erinn Panaretos	Year 5 - Tea Tree Class
TBC	Year 5 - Flame Tree Class
Madison Woodward	Year 6 - Boronia Class
Tim Watts	Year 6 - Wollemi Class
ADMINISTRATION STAFF	
Danielle Bolton	School Administration Manager/Business Manager (3 days) Days TBC
Eliza Johnston	School Administration Manager (2 days) School Administration Officer (3 days) Days TBC
Joan Seller	School Administration Officer (library) Days TBC
Caitlin O'Keffee-White	School Administration Officer (2 days) Community Liaison Officer (1 day) Days TBC
Mohammad Alam	General Assistant/Cleaner
Faye Prentice	School Crossing Supervisor
STUDENT LEARNING SUPPORT OFFICERS	
Anita Vaughan	Student Learning Support Officer
Danielle Liang	Student Learning Support Officer
Isaac Wallis	Student Learning Support Officer (Monday, Tuesday, Friday)
Hugo Rose	Student Learning Support Officer (Monday - Thursday)





# CONTACTING THE SCHOOL

The staff at Glebe Public School are committed to supporting all aspects of your child's education and are willing to assist in any way that they can; however, we ask that you assist us to maintain effective communication by following the processes outlined below when communicating with staff.

- Email teachers and/or executive staff of any requests or concerns.
- Appointments to see a staff member should be made by email, phone or in person.
- Please do not make unannounced and non-urgent requests to see staff, especially during busy times (e.g. assemblies, morning drop-off and home time).
- Please expect a two day turnaround response to the appointment request.
- The teacher is the first point of contact (not the Principal), then the stage supervisor for more complex issues.
- The teacher and/or the stage supervisor may ask for time to refer to the Principal or other relevant staff for advice.

The school also provides information to families through the School Bytes App, the school newsletter Glebe Matters, and the school Facebook and Twitter pages. Additionally, all classes use SeeSaw to share and communicate class learning and events.

Your child's class Parent Representative is another great contact for further communication between home and school.

The supervisors for each stage are:



Reliving Early Stage 1 and Stage 1 (Kindergarten, Years 1 and 2)  
Ms India Evans



Stage 2 (Years 3 and 4)  
Miss Karissa Pedron



Stage 3 (Years 5 and 6)  
Mr Kane Wheately



Assistant Principal Wellbeing and Inclusion  
Ms Dominique Chedel



Deputy Principal Instructional Leader (Aboriginal Education)  
Ms Rondelle Ryan





# ATTENDANCE!

## WHY ATTENDANCE MATTERS

When your child misses school they miss important opportunities to...

On time school attendance is vital to students success at school. We understand that at times things happen which cannot be controlled and students may be late. Students who arrive after 9:00 am are to go to the school office on arrival and receive a late note. The reason for the late arrival is recorded and we ask that parents/carers please let the school know the reason, for example 'student attended a medical appointment'. When there is no reason provided, the late arrival is recorded as unexplained. Late arrivals are closely monitored by the school executive as part of our attendance procedures.

Please refer to the 'Compulsory School Attendance - information for parents' guidelines from the Department of Education by clicking [here](#)



## Minutes lost = days lost per year

A couple of minutes here and there doesn't seem like much, but...

When your child misses just...

they miss days per year

**5** mins  
per day



=

**3** days



**30** mins  
per day



=

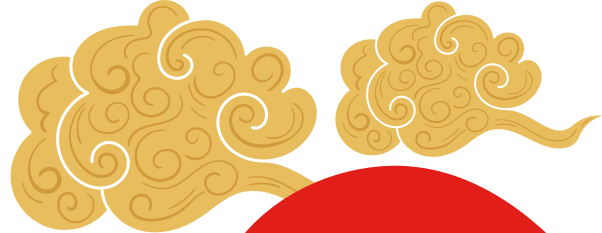
**18** days



Patterns of lateness  
can have a serious  
impact on your child's  
education.



# From the P&C...



Hello and welcome back to everyone at GPS! The school and its grounds have had a fantastic makeover during the summer break! Well done to all those involved, it looks AMAZING!

And hello to all the new parents and children who are joining us! Please feel free to reach out to us at the P&C or any other parent really! We're all here to help you in any way we can.

You'll see important dates below as well as the link to our Facebook page and another link to volunteer for all the events we organize.

Volunteers are a crucial part of the success of these events. For example, last year we organized a color run that raised enough money to buy multiple smart boards for the classrooms and that would not have happened at all if some of us didn't raise our hand to help – for a couple of hours really. Plus it's a great way to a/ have fun and b/ meet great new people!

Dates for your diary

22nd Feb – Next P&C meeting (Location and time TBA)

24th Feb – School Disco!

**THE P&C  
FACEBOOK  
PAGE CAN  
BE FOUND  
HERE!**

**CLICK HERE  
TO  
VOLUNTEER  
FOR EVENTS!**

The Glebe P & C presents

## The Welcome Back Family Disco

**FREE ENTRY**

**FEATURING**

- DJ Ezra
- Free kids sausage sizzle
- Miss Piggy Vietnamese Food Truck
- Bar selling drinks
- Icecream Stand

\*Adults must accompany children to event

**FRIDAY 24TH FEBRUARY | 6PM**  
GLEBE PUBLIC SCHOOL





**ABORIGINAL FAMILIES ARE INVITED TO JOIN  
US AT OUR FIRST...**

# **YARN UP BBQ**

<b>WHEN</b>	Wednesday 8 February
<b>TIME</b>	3.15pm
<b>WHERE</b>	Cola area



Come along and learn about what is planned for Aboriginal Education at Glebe Public School in 2023. Have an early dinner and meet your child's teacher.

**CALL AUNTY WENDY OR THE FRONT OFFICE TO RSVP DINNER | 9660 4549**





**Glebe Community Singers** are back in person!!!!

NO prior experience needed  
"I don't sing" singers welcome, professionals, and everyone in between

Sing for fun, community and health!

**Term 2 starts 5 May, 6-7pm at Glebe Public School, Music Room.**  
(Entrance through the car park in Derwent St, up rainbow stairs to office, turn left once inside the building.)

\$120 for the 9 week term or \$15 casual drop in.  
First visit free!

Everyone is welcome, no auditions, just come and have fun!

More info: Liz 0438 524 842

**NOTE:**  
May 5, 5pm, rehearsal for Town Hall gig (11 May) in music room. All welcome, including any children who want to sing at the Sydney Town Hall!!

# YOUNG FIT & DEADLY

**IMPROVING HEALTH  
AND WELLBEING OF  
OUR ABORIGINAL  
AND TORRES STRAIT  
ISLANDER YOUTH**

National Centre of Indigenous Excellence Fitness & Aquatics seeks to improve the health & well-being of Aboriginal & Torres Strait Islander Youth with an Indigenous-led health & fitness program, "Young, Fit & Deadly" with social networks as a motivator to participation. Program commences 13/02/2023.

"Young, Fit & Deadly" is designed for First Nations Youth aged 9-16. 3 sessions per week, 4pm - 6pm, each running for 2 hours with 20 Indigenous Youth attending at each session. The first hour dedicated to fitness & moving. A break for a nutritious snack & finally a homework/free time session or a healthy living lesson. Community Elders such as Auntie Beryl, conducting cooking lessons, provide information with ingrained Cultural context.

NCIE will provide swim & fitness instructors, activity space, professionals, afternoon tea & IT equipment. The program runs all year including school holidays. NCIE aims to grow "Young Fit & Deadly" as an ongoing, long-term Community program.



NATIONAL CENTRE OF  
**INDIGENOUS EXCELLENCE**  
FITNESS & AQUATICS

Info Evening Wed 8th Feb 4pm - 6pm  
180 George Street, Redfern  
02 9046 7800  
fitness@ncie.org.au



**GLEBE PUBLIC SCHOOL**

**SOCCER X SCHOOL PROGRAM / FUN - EDUCATIONAL - ACTIVE**

Starting in Term 1, Soccer X will be running a 9 Week Soccer program at Glebe Public School every **Wednesday** from **3:05pm - 4:05pm** beginning **February 8th**.

The program is available to students from **Kindy -Year 6**.  
Children will be split into groups according to age.  
All sessions will be run by **qualified coaches** who hold WWCC.  
The sessions will be **fully inclusive & fun-based**, catering for all abilities.

Cost: \$140 / 9-weeks. **Active Kids Vouchers Accepted**  
For more information and online registrations please visit  
**www.soccer-x.com** Contact: **abyr@soccer-x.com / 0420 873 317**



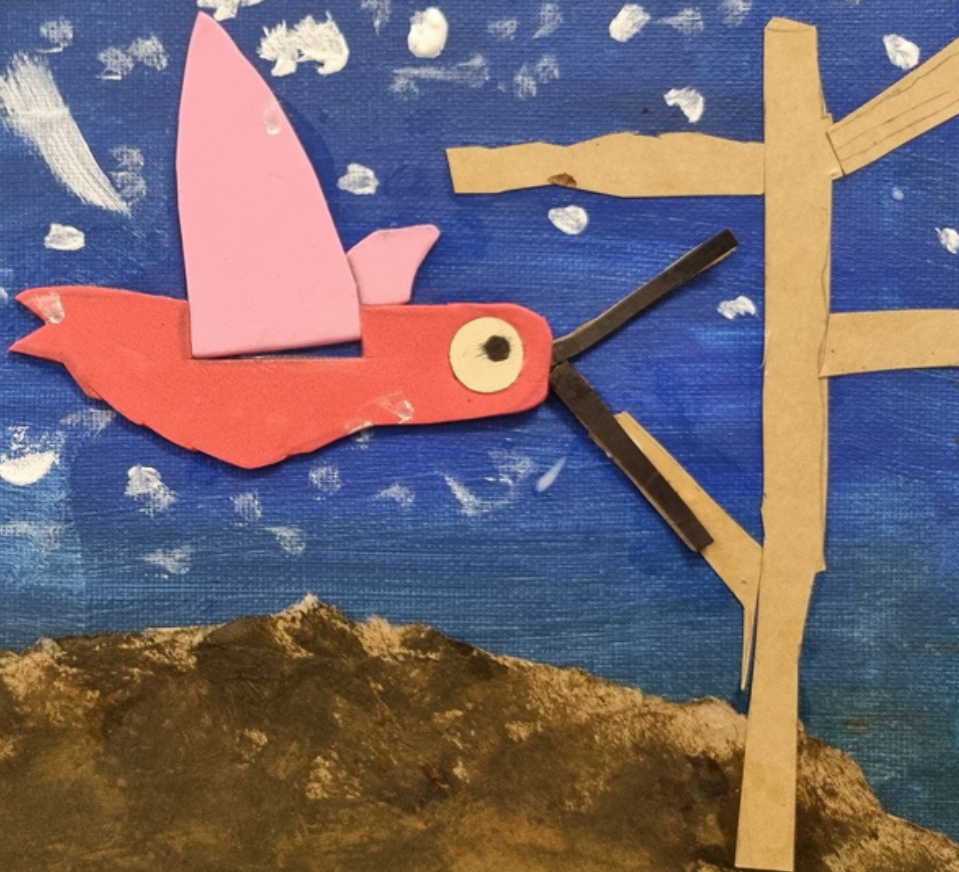


# AFTER SCHOOL ART 2023

Arty  
Cats



Artwork by Oscar



**THURSDAYS 3 - 4:30PM  
AT GLEBE PUBLIC SCHOOL**

**Art classes for students in Years 3 to 6  
Drawing, painting, sculpture, printmaking and more  
Creative Kids vouchers accepted**

**ENROL NOW! Contact Catriona  
0404 677 245 [cat.secker@outlook.com](mailto:cat.secker@outlook.com)  
[www.arty-cats.com](http://www.arty-cats.com)**