

GLEBE MATTERS

Principal's Address

Dear Parents and Families

I hope you are all well and have had a good week.

I would like to start by acknowledging our students who attended the Zone Swimming Carnival at Ashfield Aquatic Centre yesterday. They all represented our school to an exceptionally high standard and displayed excellent sportspersonship. Thank you to our families who attended the carnival and supported our students and staff. Congratulations to Ruby Lendvai, who competed in 6 events and made it through to the Sydney East District Carnival, which will be held later this month.

As you may have noticed, the work on the electronic gates commenced this week. The gates that are being replaced are the staff car park, Glebe Point Road, and the Derby Place gates. The work is expected to be completed over the coming weeks and once completed, you will be provided with information about how they will operate.

Next week, our school leaders (captains, vice captains, and prefects) will be attending The National Young Leaders Day at the International Convention Centre. The National Young Leaders Day is an opportunity for our leaders to hear real life stories of leaders in a variety of fields, such as sport, science, and the arts. We look forward to sharing more on this event next week.

Have a restful weekend and if there is anything we can do to support you and your family over the coming weeks, please do not hesitate to let us know.

Bryce Walker
Principal

bryce.walker@det.nsw.edu.au



UPDATES AND NOTICES

Parent Teacher Meetings – SAVE THE DATE

Parent- Teacher Meetings will be held between Monday 26 March and Thursday 6 April 2022. The aim of these meetings is to give a 'snapshot' of your child's learning and progress at school.

Teachers will set their availability over the two weeks for meetings before and after school hours. Parents will be able to book a meeting time with the class teacher through the School Interviews online system. You will be provided with the information on how to do this next week.

Anti Racism Contact Officer (ARCO)

All schools are required to have an Anti Racism Contact Officer (ARCO) as part of their commitment to promoting a racism free school environment and community. The ARCO for Glebe Public School is Ms Ryan. Information about the Anti-Racism Policy and the role of the ARCO can be accessed by [clicking here](#).



Dogs at School

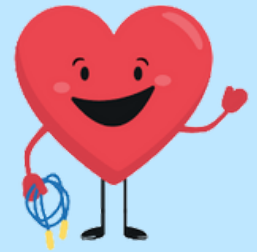
Strictly no dogs are permitted to be on school grounds, including the car park

Names on Belongings

Please ensure that your child has their name clearly marked on their belongings such as hats, jumpers, drink bottles, and lunch boxes/containers. This makes it much easier for them to be returned should they be lost or misplaced.

Jump Rope for Heart kicks off this term at Glebe Public School

Jump Rope for Heart is the Heart Foundation's primary school skipping challenge that helps kids move more, have fun and raise funds for lifesaving research and programs.



This year we've got an audacious goal to see our student Heart Heroes skipping every day of the program! Register your child online, so they can receive the full benefits of the program and participate in online fundraising, simply [follow the link here to get started](#).

Students will be skipping with their classes every day for two weeks, during this time you can share their online fundraising page with family and friends to help raise money for this great cause.

We will hold our school Jump Off Day on the 17th of March, 2023, this will mark the end of the program and is a chance for everyone to come together to skip and show off their newly learned skills. *Two students from each class will be chosen to showcase their excellent skipping skills on Friday after lunch. You are welcome to join us at 2:30pm if you can.*

Thank you for supporting the Jump Rope for Heart program!

School Arrival Time

A teacher is on duty from 8:30am. If students arrive before this time, arrangements can be made with Centipede.

Anti Bullying Plan

All schools are required to complete and implement an Anti Bullying Plan as a key part of their commitment to creating a safe and supportive environment for students, staff, and community. The Glebe Public School 2023 Anti Bullying Plan can be accessed by [clicking here](#).



K - 2 ENGLISH SYLLABUS

The English K-2 syllabus shows essential learning as outlined in the research for building foundations in reading and writing.

The syllabus recognises that for most students, oral language comes before written language. Oral language outcomes and content are inclusive of students whose primary communication is not through speaking and listening.

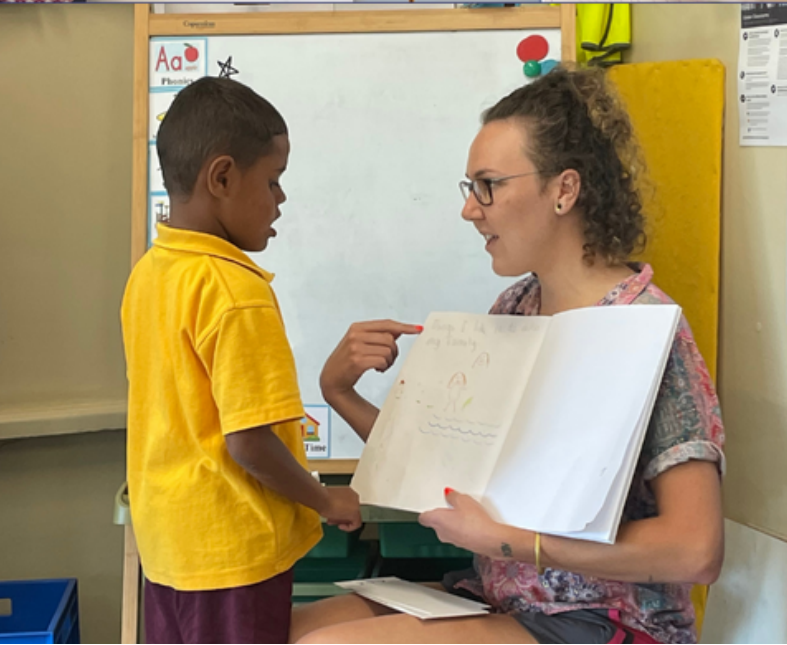
Each research-based key to reading has an explicit outcome, including phonics. The teaching advice suggests that teachers should typically provide daily opportunities for students to practise reading, starting with the use of decodable texts.

A focus on reading 'fluency' is a key component of building strong foundations.

The syllabus provides an emphasis on writing and ensuring that students have a clear understanding of how to create a sentence.

'Literature' is highlighted as essential in the development of core knowledge for subject English. Listening to and using literature can foster an understanding, appreciation and love of reading.

The content is structured to highlight the parallel connections across oral language, reading and writing.



From the P&C...

**VOLUNTEER FOR
THE STREET FAIR
HERE!**

On Sunday 5 March, the Glebe Street Fair is on again and the P&C will be present. **WE ARE STILL LOOKING FOR MORE BAKERS** and people to (wo)man the stalls! See separate poster for more information.

And our next P&C meeting is on 28 March at GPS (6:30pm).

Reminder: we now have a sponsorship agreement with the Toxteth Hotel. The hotel is generously supporting us by donating 10c of every dollar YOU spend back to the P&C. All you need to do is tell the hotel staff you are from the GPS community at the point of purchase. Please support this fantastic local business and the school!



**THE P&C FACEBOOK
PAGE CAN BE
FOUND HERE!**

Dates For Your Diary:

5th March: Glebe street Fair (10am-3pm)

28 March: next P&C meeting (6:30pm at GPS)

1st-2nd April: Annual Book Sale

CENTIPEDE



FROM CENTIPEDE



We are excited to be back in the swing of Term 1 and welcome new and existing families to Centipede. We have been enjoying craft, Lego club, cooking and messy science and look forward to more fun activities suggested by the children over the coming weeks.

Just a reminder that during the school term, Centipede is open from 7:30 to 8:45am before school (breakfast provided) and 3:00 to 5:45pm after school (afternoon tea provided).

Families are welcome to make ongoing bookings or casual bookings at short notice. However, an enrolment form is required for every child that attends the service. Please visit our website to [download an enrolment form](#).

For any questions or to make a booking, please email Centipede: centipede.glebe@yahoo.com.au.

Don't forget that Child Care Subsidy (CCS) is available to subsidise Centipede fees for many families. If you are not already receiving CCS, it is available for Before, After School and Vacation Care. More information can be found at the [Australian Government Department of Human Services](#). If you need any assistance with your application, please don't hesitate to get in touch with us and we can help you with the process.



FREE

CRICKET

AT GLEBE PUBLIC SCHOOL

STARTING THURSDAY, MARCH 2ND

TIME	3:30PM - 4:30PM
WHERE	GRASS AREA AT GPS
COST	FREE
WHEN	MARCH 2ND - MARCH 23RD

REGISTER HERE!



ATTENDANCE!

WHY ATTENDANCE MATTERS

When your child misses school they miss important opportunities to...

On time school attendance is vital to students success at school. We understand that at times things happen which cannot be controlled and students may be late. Students who arrive after 9:00 am are to go to the school office on arrival and receive a late note. The reason for the late arrival is recorded and we ask that parents/carers please let the school know the reason, for example 'student attended a medical appointment'. When there is no reason provided, the late arrival is recorded as unexplained. Late arrivals are closely monitored by the school executive as part of our attendance procedures.

Please refer to the 'Compulsory School Attendance - information for parents' guidelines from the Department of Education by clicking [here](#)

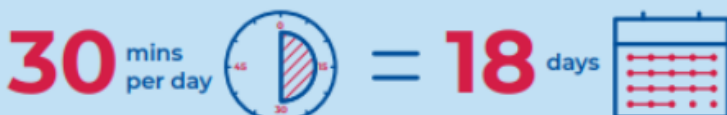
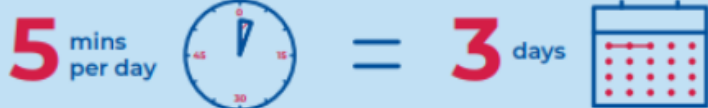


Minutes lost = days lost per year

A couple of minutes here and there doesn't seem like much, but...

When your child misses just...

they miss days per year



Patterns of lateness can have a serious impact on your child's education.



Glebe TreeHouse

A fun, free family space where little things can grow

Schools as Community Centre

Inside Glebe Public School. Please enter via Derby Place gates.

0409 835 754

Term 1 2023

MONDAY



MyTime Group

10am - 12pm

A group for parents and carers with children under 18 years who have additional needs. Free child care, activities and more.



IDEAS?

Have an idea that will benefit local families? We'd love to hear it!

Contact us.

TUESDAY

Glebe Playgroup

10am - 12pm

A friendly Supported Playgroup for Glebe families with children 0 - 5 years.



Drop-in Help

2pm - 4pm

Forms or anything reading, writing or spelling.

For Parents & Carers.



WEDNESDAY



Bilingual Playgroup

10:30am - 12:30pm

For families who speak more than one language.

Kids 0 - 5 years



THURSDAY

Ngara Nanga Mai

Aboriginal Playgroup

10am - 12:30pm



Yarn - Eat - Play
0419 846 485

Hearing Australia HAPEE Ears For Early Years

Free hearing assessments for Aboriginal and Torres Strait Islander children aged 0 - 5 years. Visiting in March.

FRIDAY



BABY GROUP

10am - 11:30am

A group for parents and carers and, their babies aged 0 - 18 months.

Family Workers

Because parenting is a tough gig.

We have strong referral pathways with a variety of Family Workers. Contact us for more.



GLEBE PUBLIC SCHOOL

SOCCER X SCHOOL PROGRAM / FUN - EDUCATIONAL - ACTIVE

Starting in Term 1, Soccer X will be running a 9 Week Soccer program at Glebe Public School every **Wednesday** from **3:05pm - 4:05pm** beginning **February 8th**.

The program is available to students from **Kindy - Year 6**. Children will be split into groups according to age. All sessions will be run by **qualified coaches** who hold WWCC. The sessions will be **fully inclusive & fun-based**, catering for all abilities.

Cost: \$140 / 9-weeks. **Active Kids Vouchers Accepted**
For more information and online registrations please visit www.soccer-x.com Contact: abyr@soccer-x.com / 0420 873 317



Hilda Booler Kindergarten

**Our preschools offer
education and care for
children aged 3 to 5 years.**

Qualified and experienced educators place a strong focus on quality interactions and learning. We facilitate learning through a play-based program.

The centre offers spacious indoor areas with a sun safe outdoor play area. Our programs provide opportunities for all children to flourish and meet their full potential through a range of educational experiences.

We pride ourselves on building meaningful relationships with children and their families.

**Monday to Friday
8:30am to 4pm**

We close for five weeks over
Christmas and New Year.

Enrolment priorities

Preschool aged children, aged 3 to 5 years,
in one or more of the following categories:

- from low-income families
(with a health care card)
- Aboriginal or Torres Strait Islander
- with English language needs
- with disability
- with additional needs.

Register your interest, positions are limited.

For more information

Hilda Booler Kindergarten
Jubilee Park, Eglinton Road, Glebe
02 9265 9033
hbk@cityofsydney.nsw.gov.au
city.sydney/hbk



DRAMA SCENE AFTER SCHOOL ART

DRAMA CLASSES AT GLEBE



TUESDAYS
3.00pm - 4.10pm

SPOTS OPEN!

ALL YEARS

After Drama Scene students may be picked up or go to Centipede

Term 1 Starts 14 February



Enrol Easily On Website

www.dramascene.com.au

WHATSAPP Steph 0407 235 914

April School Holiday Activities

COST: \$70 Mixed day Activities

Parkour intensive \$70

Gymnastics intensives \$170 for a 2 day workshop

Time: 8:30-4pm

BOOK NOW



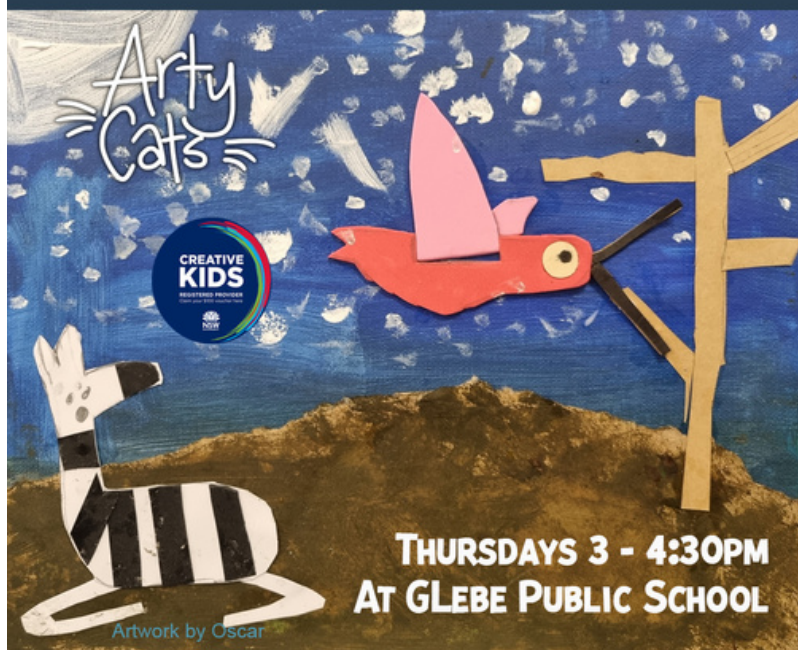
Additional Info: Label all personal belongings. Please bring a packed lunch, water bottle and wear enclosed shoes with socks

Tues 11th	Gymnastics, Basketball, Arts & Crafts, Dance Games, Gymnastics beginner intensive day 1
Wed 12th	Cricket, Science, Hockey, Cheerleading, Gymnastics beginner intensive day 2
Thur 13th	Laser Tag, Minute to win it, Parkour, Bowling, Gymnastics Beginner day 1
Fri 14th	Mini Olympics, Cooking, Gymnastics, Boxing, Gymnastics Beginner day 2
Sat 15th	Parkour Beginner Intensive
Mon 17th	Gymnastics, Science, Basketball, Minute to win it, Gymnastics Intermediate Intensive day 1
Tues 18th	Laser Tag, Cricket, Arts & Crafts, Bowling, Gymnastics Intermediate Intensive day 2
Wed 19th	Dance Games, Cooking, Boxing, Cheerleading, Parkour intermediate intensive
Thur 20th	Parkour, Oz tag, Soccer, Gardening, Gymnastics Beginner Intensive day 1
Fri 21st	Mini Olympics, Laser Tag, Science, Hockey, Gymnastics Beginner Intensive day 2
Mon 24th	Minute to win it, hockey, Laser tag, Arts & Crafts

CONTACT US: Phone: 0296602557

Email: glebeleichhardt@pcycsw.org.au

2023



THURSDAYS 3 - 4:30PM
AT GLEBE PUBLIC SCHOOL

Art classes for students in Years 3 to 6
Drawing, painting, sculpture, printmaking and more
Creative Kids vouchers accepted

ENROL NOW! Contact Catriona

0404 677 245 cat.secker@outlook.com

www.arty-cats.com



Dulwich High School
of Visual Arts & Design

Seaview Street
Dulwich Hill NSW 2203
T 02 9560 7299
F 02 9550 0929
E dulwich-h.school@det.nsw.edu.au
W www.dulwich-h.schools.nsw.gov.au
ABN 79 166 877 870
Principal: Ms C. Alves

OPEN NIGHT

For parents / carers and Year 6 students
interested in enrolling at
Dulwich High School of Visual Arts & Design in 2024

Wednesday 1 March

3.30pm to 6.30 pm

In the school multipurpose hall

Information and guided tours of the school will run
every 15 minutes

Principal's presentation 4pm & 5:00pm
No bookings necessary

Application forms for the Visual Art & Design Specialist Stream are
now available for downloading from the website or from Dulwich
High School of Visual Art and Design (just contact the school).



Sing your heart out ... with *Glebe Singers!*

We're a community choir, very fortunate to have a local professional music director, Liz Lecoanet (also a singing coach & international performer).

First visit is FREE

Everyone is welcome. No audition needed.

Want more info?

E: Merren – merrensmith@hotmail.com

F: facebook.com/glebecommunitysingers

Next term dates

From 2 February 2023 for 9 weeks

GLEBE JUNIOR HOCKEY



90 YEARS STRONG
IN OUR COMMUNITY

REGISTER NOW TO PLAY IN 2023!

**MIXED TEAMS
AGES 4 - 17
ALL ABILITIES
DEVELOPMENT FOCUS
ACCREDITED COACHES**



Enrol now: www.glebehockey.org.au
Enquiries: glebejuniorhockey@gmail.com

@glebehockey



GPS PARENTS.. MENTION THIS AD FOR A SIGN UP BONUS!

THE OUTDOOR SQUAD BOOTCAMP CAN HELP YOU GET FITTER, STRONGER, HEALTHIER, AND MOST OF ALL, HAPPIER!

- IT'S TIME TO MAKE A HEALTHY LIFESTYLE YOUR PRIORITY
- WHATEVER YOUR FITNESS GOALS ARE THE OUTDOOR SQUAD IS HERE FOR YOU!
- WE HAVE LOTS OF CLASSES & TIMES TO GET YOUR FITNESS JOURNEY CRANKING!

IF THIS SOUNDS LIKE YOU, GET YOUR FREE 3-DAY PASS TO ATTEND GROUP FITNESS SESSIONS AT OUR CAMPERDOWN AND REDFERN LOCATIONS TODAY!

IT'S TIME TO MAKE THE COMMITMENT TO EMPOWERING YOURSELF SO YOU CAN ENJOY LIFE TO THE FULLEST!
WHAT ARE YOU WAITING FOR?

WHAT WE CAN OFFER YOU



NO TWO CLASSES ARE EVER THE SAME!



20+ MORNING & EVENING CLASSES



OUTDOOR AND UNDERCOVER SPACES



REDFERN AND CAMPERDOWN LOCATIONS

HUGE SELECTION OF EQUIPMENT
BARBELLS, DUMBBELLS, KETTLEBELLS
DEADBALLS & SANDBAGS



FREE PARKING AVAILABLE
FRIENDLY COMMUNITY VIBE
REAL RESULTS!

SUMMER IS ON THE WAY!

THE OUTDOOR SQUAD

CALL US NOW ON 0402 439 361 FOR A FREE TRIAL!

THE OUTDOOR SQUAD

COLOURED BY YOU COMPETITION

COLOUR OUR NEXT TOTE BAG & WIN \$100 OF GROCERIES ON US



26 TO BE WON. A WINNER WILL BE PICKED FOR EACH STORE AS VOTED BY OUR LOCAL FRIENDS OF THE FARM.

GRAB YOUR ENTRY FORM AT THE REGISTERS OR SCAN THE QR CODE FOR ONLINE ENTRY DETAILS.

Competition starts 15/02/23 & ends 12/03/23. Limited to 1 entry per person. Entries must follow the competition theme and specifications and be coloured and finished with coloured markers. Initial judging process will be conducted by Harris Farm Markets on 20/03/23. The Promoter will be responsible for selecting drawings/entries and making them available online for voting by Harris Farm Friends of the Farm customers to choose 26 winners (one per store). Selected entries will be disclosed on our EDNs and social channels on 29/03/23 and winners announced on 05/04/23. Promoter is Harris Farm Markets Pty Ltd (ABN 79 093 040 754) of Warehouse W, Sydney Markets, Flemington NSW 2129. Full T&Cs on harrisfarm.com.au/coloured-by-you

