

GLEBE MATTERS

Principal's Address

Dear Parents and Families

One of my highlights this week was teaching and spending time with Kurrajong class. I was so impressed with the work they have been undertaking with Ms McCullough and their ability and excitement in sharing their learning. We discussed a range of topics including how punctuation can be used to structure your writing, the importance of using descriptive language to engage your audience, and how fractions are seen and used in every day life. I look forward to more class visits next week.

International Women's Day (IWD) is a global event celebrated annually on March 8 as a focal point in the women's rights movement, bringing attention to issues such as gender equality, and violence and abuse against women. The 2023 theme of Embrace Equity is to get the world talking about why equal opportunities aren't enough. People start from different places, so true inclusion and belonging require equitable action. I was incredibly proud of the work that our students undertook on this theme and the insight they provided.

This week our student leadership team attended the National Young Leaders Day at the International Convention Centre. They had a wonderful time and had the opportunity to hear from quality speakers from a range of industries and experience. To see the excitement on their faces when they returned to school was fantastic! Thank you to Miss Panaretos, Miss Pedron, Miss Rush, and Miss Ryan for organising and accompanying our students to this event.

Have a restful weekend and if there is anything we can do to support you and your family over the coming weeks, please do not hesitate to let us know.

Bryce Walker
Principal
bryce.walker@det.nsw.edu.au



UPDATES AND NOTICES

Parent Teacher Meetings – SAVE THE DATE

Parent-Teacher Meetings will be held between Monday 26 March and Thursday 6 April 2022. The aim of these meetings is to give a 'snapshot' of your child's learning and progress at school. Teachers will set their availability over the two weeks for meetings before and after school hours. Parents will be able to book a meeting time with the class teacher through the School Interviews online system.

The booking system will be open from Monday 13 March 2023. Information on booking a time slot has been sent home via email and Seesaw this week.



School Arrival Time

A teacher is on duty from 8:30am. If students arrive before this time, arrangements can be made with Centipede.

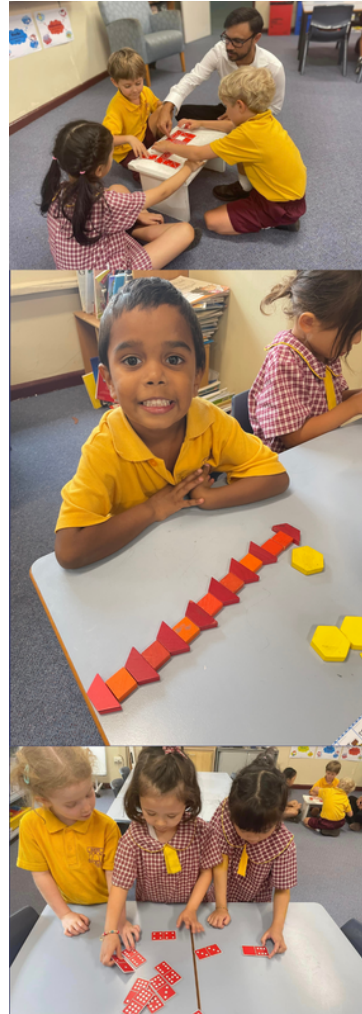
2023 Premiers Reading Challenge

The 2023 Premiers Reading Challenge has opened. You can start to enter your reading log on the website, remembering that you can include books that you have read since September 2022.

All books need to be entered by Friday 18th August 2023. A full list of the rules and further details can be found on the PRC webpage here.

Students can log on via the [PRC webpage](#) or through the PRC link on the DET Student Portal.

See Ms Callen if you have any questions. Happy reading.



K - 2 MATHEMATICS SYLLABUS

The new Mathematics syllabus clearly shows essential learning and supports students to make connections across concepts as outlined in the research for building foundations in Mathematics.

There is a focus on developing reasoning skills to support a deeper understanding.

Content is structured to highlight the parallel connections across Number and Algebra, Measurement and Space, and Statistics and Probability, underpinned by the latest research.

Teaching advice for Mathematics includes examples to support the development of language and vocabulary. Vocabulary knowledge influences the development of reading, writing, oral language and Mathematics skills.

The new syllabus affirms the strong evidence base of outcomes and content, with an increased emphasis on place value.

Jarjums – International Womens Day

The students learnt the importance of International Women's Day by learning about the significant role of the traditional Aboriginal woman prior to colonisation and some of the tasks they had to perform to care for their families. Jarjums listened to a story of a young Aboriginal girl growing up after colonisation. They looked at images of women weaving, gathering berries, digging for yams and fishing. Students were shown picture and told stories of important Aboriginal women of today and how they have been trailblazers for not only Aboriginal people but women. Some of the Jarjums named Miss Ryan and Aunty Wendy as important women who look after them all at Glebe PS.

Then they finished off by drawing pictures of their mums, nans, aunties and completed some questions on who inspires them and why, whilst listening to Jessica Mauboy. Thank you to Mr Barthes for coming in and supporting Jarjums this week.



UPDATES AND NOTICES

Packed Recess and Lunch

It is expected that students attend school with a packed recess and lunch rather than having food delivered to the school during the day. Please also ensure that your child has enough food for the day.



Emergency Recess and Lunch

There has been an increase in the number of students who are requesting emergency recess and/or lunch. Emergency recess and lunches are for genuine emergencies such as a student who has dropped their food, not because they don't like what has been packed for them.

Dogs at School

Strictly no dogs are permitted to be on school grounds, including the car park



Jump Rope for Heart kicks off this term at Glebe Public School

Jump Rope for Heart is the Heart Foundation's primary school skipping challenge that helps kids move more, have fun and raise funds for lifesaving research and programs.

Register your child online, so they can receive the full benefits of the program and participate in online fundraising, simply [follow the link here to get started](#).

Students will be skipping with their classes every day for two weeks, during this time you can share their online fundraising page with family and friends to help raise money for this great cause.

We will hold our school Jump Off Day on the 17th of March, 2023, this will mark the end of the program and is a chance for everyone to come together to skip and show off their newly learned skills. *Two students from each class will be chosen to showcase their excellent skipping skills on Friday after lunch. You are welcome to join us at 2:30pm if you can.*



Names on Belongings

Please ensure that your child has their name clearly marked on their belongings such as hats, jumpers, drink bottles, and lunch boxes/containers. This makes it much easier for them to be returned should they be lost or misplaced.

from the P&C...

Our next P&C meeting is on 28 March at GPS (6:30pm)

Min sends a big thank you to everyone who helped and baked for the stall last weekend. We ended up grossing over \$3700 in funds for school resources! There is one plate that was not labelled but is clean and ready for pickup in the school office. Thank you again!!

And the annual book sale is now fast approaching. See separate poster and link below to volunteer. The sale (1-2 April) is a lot of fun and you get to meet a lot of friendly people! Please note you can donate good quality books on Friday 31 March (see address on poster) from 9am to noon.

Reminder: we now have a sponsorship agreement with the Toxteth Hotel. The hotel is generously supporting us by donating 10c of every dollar YOU spend back to the P & C. All you need to do is tell the hotel staff you are from the GPS community at the point of purchase. Please support this fantastic local business and the school!

**VOLUNTEER
FOR THE
BOOK SALE
HERE!**

THE P&C FACEBOOK
PAGE CAN BE
FOUND HERE!

Dates For Your Diary:

28 March: next P&C meeting (6:30pm at GPS)

1st-2nd April: Annual Book Sale (Belendi, 186 Glebe Point Road)

Glebe

Supporting Glebe Public School

ANNUAL BOOK SALE

Sat 1 - Sun 2 April

9am - 4pm

BENLEDI

186 Glebe Point Rd,
Glebe

Donations to Benledi
Friday 31 March 9am - 12 noon

- ✓ good quality books
- ✗ damaged, outdated, mouldy
- ✗ annuals, encyclopedias, magazines

Info: 0418 271 874 | books@glebeschool.org.au



**Glebe
TreeHouse**

A fun, free family space where little things can grow

Schools as Community Centre

Inside Glebe Public School. Please enter via Derby Place gates.

0409 835 754

Term 1 2023

MONDAY



MyTime Group
10am - 12pm

A group for parents and carers with children under 18 years who have additional needs. Free child care, activities and more.



IDEAS?

Have an idea that will benefit local families? We'd love to hear it!



TUESDAY

**Glebe
Playgroup**

10am - 12pm



A Supported Playgroup for Glebe families with children 0 - 5 years.



Food Support



We receive fresh fruit and pantry staples every Tuesday afternoon. Our food is stored in our Kindness Cupboard. Drop in **any day** to check it out!

WEDNESDAY



**Bilingual
Playgroup**

10:30am - 12:30pm

For families who speak more than one language. children 0 - 5 years.

THURSDAY

**Ngara Nanga
Mai**

Aboriginal Playgroup
10am - 12:30pm



0419 846 485

Drop-in Help

10am - 12pm

For Parent & Carers
Anything reading, writing & spelling

Hearing Australia
HAPEE Ears For Early Years

Back in April

FRIDAY



BABY GROUP

10am - 11:30am

A group for parents and carers and, their babies aged 0 - 18 months.

Family Workers

Because parenting is a tough gig.

We have strong referral pathways with a variety of Family Workers. Contact us for more.

9660 4549 | glebe-p.school@det.nsw.edu.au | [Find us here](#)



THE FATHERING PROJECT & GLEBE PUBLIC SCHOOL

HANDBALL TOURNAMENT AND SAUSAGE SIZZLE

FOR DADS AND DAD-FIGURES

MARCH 21 (TUESDAY WEEK 9)

5:30PM - 7PM

GLEBE PUBLIC SCHOOL PLAYGROUND

FILL OUT THE FORM HERE

(SO WE CAN ORDER ENOUGH FOOD!)



ATTENDANCE!

WHY ATTENDANCE MATTERS

When your child misses school they miss important opportunities to...

On time school attendance is vital to students success at school. We understand that at times things happen which cannot be controlled and students may be late. Students who arrive after 9:00 am are to go to the school office on arrival and receive a late note. The reason for the late arrival is recorded and we ask that parents/carers please let the school know the reason, for example 'student attended a medical appointment'. When there is no reason provided, the late arrival is recorded as unexplained. Late arrivals are closely monitored by the school executive as part of our attendance procedures.

Please refer to the 'Compulsory School Attendance - information for parents' guidelines from the Department of Education by clicking [here](#)



Minutes lost = days lost per year

A couple of minutes here and there doesn't seem like much, but...

When your child misses just...

they miss days per year

5 mins
per day



=

3 days



30 mins
per day



=

18 days



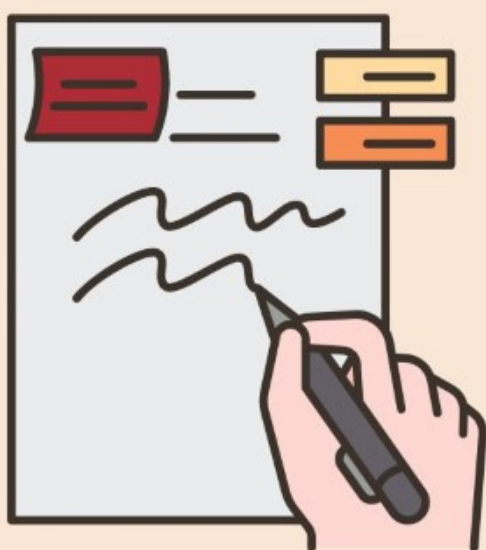
Patterns of lateness
can have a serious
impact on your child's
education.



DROP IN HELP

See Vanessa or Isabel for help with
forms or anything
reading, writing and spelling.

For Parents & Carers



Thursdays, 10am - 12pm

At the Glebe TreeHouse

Inside Glebe Public School. 0409 835 754

TAFENSW



Reading Writing **Hotline**
1300 6 555 06



A free national referral service for adults.

DRAMA SCENE

DRAMA CLUB AT GLEBE

TRIAL SPOTS AVAILABLE

KINDERGARTEN UP TO YEAR 6

Tuesdays After School 3.00pm - 4.10pm

After Drama Scene students may be picked up or go to Centipede



Enrol Easily On Website

www.dramascene.com.au

WHATSAPP Steph 0407 235 914



Hilda Booter Kindergarten

Our preschools offer education and care for children aged 3 to 5 years.

Qualified and experienced educators place a strong focus on quality interactions and learning. We facilitate learning through a play-based program.

The centre offers spacious indoor areas with a sun safe outdoor play area. Our programs provide opportunities for all children to flourish and meet their full potential through a range of educational experiences.

We pride ourselves on building meaningful relationships with children and their families.

Monday to Friday
8:30am to 4pm
We close for five weeks over Christmas and New Year.

Enrolment priorities

Preschool aged children, aged 3 to 5 years, in one or more of the following categories:

- from low-income families (with a health care card)
- Aboriginal or Torres Strait Islander
- with English language needs
- with disability
- with additional needs.

Register your interest, positions are limited.

For more information
Hilda Booter Kindergarten
Jubilee Park, Eglinton Road, Glebe
02 9265 9033
hbk@cityofsydney.nsw.gov.au
city.sydney/hbk

CITY OF SYDNEY

AFTER SCHOOL ART 2023



**THURSDAYS 3 - 4:30PM
AT GLEBE PUBLIC SCHOOL**

Art classes for students in Years 3 to 6
Drawing, painting, sculpture, printmaking and more
Creative Kids vouchers accepted

ENROL NOW! Contact Catriona
0404 677 245 cat.secker@outlook.com
www.arty-cats.com



Sing your heart out ... with
Glebe Singers!

We're a community choir, very fortunate to have a local professional music director, Liz Lecoanet (also a singing coach & international performer).

First visit is FREE

Everyone is welcome. No audition needed.

Want more info?

E: Merren - merrensmith@hotmail.com

F: facebook.com/glebecommunitysingers

Next term dates

From 2 February 2023 for 9 weeks

April School Holiday Activities

COST: \$70 Mixed day Activities
Parkour intensive \$70
Gymnastics intensive \$170 for a 2 day workshop
Time: 8:30-4pm

BOOK NOW



Additional Info: Label all personal belongings. Please bring a packed lunch, water bottle and wear enclosed shoes with socks

Tues 11th	Gymnastics, Basketball, Arts & Crafts, Dance Games, Gymnastics beginner intensive day 1
Wed 12th	Cricket, Science, Hockey, Cheerleading, Gymnastics beginner intensive day 2
Thur 13th	Laser Tag, Minute to win it, Parkour, Bowling, Gymnastics Beginner day 1
Fri 14th	Mini Olympics, Cooking, Gymnastics, Boxing, Gymnastics Beginner day 2
Sat 15th	Parkour Beginner Intensive
Mon 17th	Gymnastics, Science, Basketball, Minute to win it, Gymnastics Intermediate intensive day 1
Tues 18th	Laser Tag, Cricket, Arts & Crafts, Bowling, Gymnastics Intermediate intensive day 2
Wed 19th	Dance Games, Cooking, Boxing, Cheerleading, Parkour Intermediate Intensive
Thur 20th	Parkour, Oz Tag, Soccer, Gardening, Gymnastics beginner intensive day 1
Fri 21st	Mini Olympics, Laser Tag, Science, Hockey, Gymnastics Beginner intensive day 2
Mon 24th	Minute to win it, hockey, Laser Tag, Arts & Crafts

CONTACT US: Phone: 0296602557

Email: glebelehardt@pcycnsw.org.au

PCYC | GLEBE LEICHHARDT

IS LIFE CHANGING



COLOURED BY YOU COMPETITION

COLOUR OUR NEXT TOTE BAG & WIN \$100 OF GROCERIES ON US



26 TO BE WON. A WINNER WILL BE PICKED FOR EACH STORE AS VOTED BY OUR LOCAL FRIENDS OF THE FARM.

GRAB YOUR ENTRY FORM AT THE REGISTERS OR SCAN THE QR CODE FOR ONLINE ENTRY DETAILS.

Competition starts 14/02/23 & ends 12/03/23. Limited to 1 entry per person. Entries must be below the competition theme and specifications and be submitted and finished with coloured markers. Initial judging process will be conducted by Regatta Farm Markets on 20/02/23. The winner will be responsible for selecting drawing entries and making them available online for voting by Regatta Farm Friends of the Farm customers to choose 25 winners (one per store). Selected entries will be displayed on our 24hr and social channels on 20/02/23 and winners announced on 24/02/23. Prizes are \$100 in Regatta Farm Markets. By 14/03/23. 75 000 040 040 of Regatta Farm, Sydney Markets, Harrington NSW 2023. Full T&Cs on harrington.com.au/coloured-by-you



GLEBE PUBLIC SCHOOL

SOCCER X SCHOOL PROGRAM / FUN - EDUCATIONAL - ACTIVE

Starting in Term 1, Soccer X will be running a 9 Week Soccer program at Glebe Public School every **Wednesday from 3:05pm - 4:05pm beginning February 8th.**

The program is available to students from **Kindy - Year 6**. Children will be split into groups according to age. All sessions will be run by **qualified coaches** who hold WWCC. The sessions will be **fully inclusive & fun-based**, catering for all abilities.

Cost: \$140 / 9-weeks. **Active Kids Vouchers Accepted**
For more information and online registrations please visit
www.soccer-x.com Contact: abyr@soccer-x.com / 0420 873 317



GLEBE JUNIOR HOCKEY

GLEBE JHC
90 YEARS STRONG
IN OUR COMMUNITY

REGISTER NOW TO PLAY IN 2023!

**MIXED TEAMS
AGES 4 - 17
ALL ABILITIES
DEVELOPMENT FOCUS
ACCREDITED COACHES**



Enrol now: www.glebehockey.org.au
Enquiries: glebejuniorhockey@gmail.com
@glebehockey