

GLEBE MATTERS

Principal's Address

Dear Parents and Families

I hope you have all had a productive week!

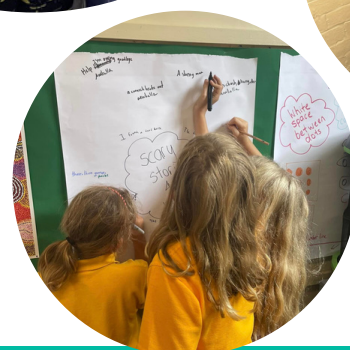
I want to thank you for working in partnership with us to improve student attendance rates across the school. Our Term 1 data is currently sitting at 84% of students attending school over 90% of the time - this is a wonderful achievement! For us to further improve on these results, please remember that it is vital that if your child is absent from school, even for 1 day, that you provide the school with an explanation for the absence.

This week our students in Years 3 and 5 commenced the 2023 NAPLAN tests, which will run for several weeks. I want to commend our staff for their organisation and ensuring that our students are supported throughout this process.

A big congratulations to Ruby Lendvai in Year 5, who will be representing the school at the State Swimming Carnival. Ruby swam a personal best time of 32.32 seconds for 50m freestyle. We wish you all the best Ruby!

Have a restful weekend and if there is anything we can do to support you and your family over the coming weeks, please do not hesitate to let us know.

Bryce Walker
Principal
bryce.walker@det.nsw.edu.au



UPDATES AND NOTICES

Packed Recess and Lunch

It is expected that students attend school with a packed recess and lunch rather than having food delivered to the school during the day. Please also ensure that your child has enough food for the day.



National Close the Gap Day

Since 2007 the National #CloseTheGap Day is observed on the third Thursday of March, falling on March 16 this year.

Grounded in Aboriginal and Torres Strait Islander peoples' right to be self-determining, the Close the Gap Campaign's 2023 Report is available today, "Strong Culture, Strong Youth: Our Legacy, Our Future", highlighting the vital role of culture in achieving positive long-term health outcomes for Aboriginal and Torres Strait Islander peoples and communities.

At Glebe Public School, we need to celebrate and reflect on our achievements, by providing a healthy breakfast to all our students and encouraging healthy eating we are working towards long term health outcomes for our students.

Ms Ryan - Deputy Principal Aboriginal Education

Emergency Recess and Lunch

There has been an increase in the number of students who are requesting emergency recess and/or lunch. Emergency recess and lunches are for genuine emergencies such as a student who has dropped their food, not because they don't like what has been packed for them.

Jump Rope for Heart

Jump Rope for Heart is the Heart Foundation's primary school skipping challenge that helps kids to move more, have fun and raise funds for lifesaving research and programs.

Over the past few weeks our students have been skipping their hearts out during recess, lunch and classroom PE times, and today our student leaders ran the Glebe Public School Skip Off. This event celebrated the end of our Jump Rope for Heart program by showcasing some of our talented and hard-working skippers from Kindergarten to Year 6. During the Skip Off, two students from each class were chosen to demonstrate their amazing skipping skills to all students, teachers and visitors in our school. It was wonderful to see how much progress our students have made with their skipping over the past few weeks (as well as the amazing tricks they have learned!) A big thank you to our student leaders and house captains for running our Skip Off with such enthusiasm and care, and well done to all students for being respectful audience members throughout the afternoon.

Congratulations to those students who have been able to raise money for the Heart Foundation by signing up through the Jump Rope for Heart website. Next week, we will hear about some of our fundraising heroes at Glebe Public School, including one student who has currently raised over \$500 for the Heart Foundation! What an incredible effort! If you'd still like to help your child fundraise, it's not too late! You can [follow this link](#) to set up a fundraising page.

Mr Todd Mackie



UPDATES AND NOTICES

Parent Teacher Meetings

Parent- Teacher Meetings will be held between **Monday 26 March and Thursday 6 April 2022**. The aim of these meetings is to give a 'snapshot' of your child's learning and progress at school. Teachers will set their availability over the two weeks for meetings before and after school hours. Parents will be able to book a meeting time with the class teacher through the School Interviews online system. The booking system is open. Information on booking a time slot has been sent home via email and Seesaw.



2023 Premiers Reading Challenge

The 2023 Premiers Reading Challenge has opened. You can start to enter your reading log on the website, remembering that you can include books that you have read since September 2022.

All books need to be entered by **Friday 18th August 2023**. A full list of the rules and further details can be found on the PRC [webpage here](#).

Students can log on via the [PRC webpage](#) or through the PRC link on the DET Student Portal.

See Ms Callen if you have any questions. Happy reading.



Dogs at School

Strictly no dogs are permitted to be on school grounds, including the car park

Stewart House Donations

Thank you to our community for helping fundraise **\$172.90** for the Stewart House Donation Drive. Your donation supports 1600 children who attend Stewart House from public schools in NSW and ACT every year. Good luck in the draw!

Ms Helen Michael

Scholastic Book Club

The latest Scholastic Book Club has been sent home with students. Issue 2 will close on **Wednesday 22nd March 2023** for delivery before the end of term. To order please visit the [website here](#).



The **EASIEST** way for parents to order and pay for **Book Club!**

Linked Online Ordering & Payment platform

It's easy to order and pay online for your child's **Book Club** order using your credit card. Your order will electronically be linked to your school when you order and pay by **LOOP**.

Also available as an app:



School Arrival Time

A teacher is on duty from 8:30am. If students arrive before this time, arrangements can be made with Centipede.

Names on Belongings

Please ensure that your child has their name clearly marked on their belongings such as hats, jumpers, drink bottles, and lunch boxes/containers. This makes it much easier for them to be returned should they be lost or misplaced.



FROM THE P&C...

Our next P&C meeting is on 28 March at GPS (6:30pm)

And the annual book sale is now fast approaching. See separate poster and link below to volunteer. The sale (1-2 April) is a lot of fun and you get to meet a lot of friendly people! Please note you can donate good quality books on Friday 31 March from 9am to noon.

Reminder: we now have a sponsorship agreement with the Toxteth Hotel. The hotel is generously supporting us by donating 10c of every dollar YOU spend back to the P & C. All you need to do is tell the hotel staff you are from the GPS community at the point of purchase. Please support this fantastic local business and the school!!

THE P&C FACEBOOK PAGE CAN BE FOUND HERE!

Dates For Your Diary:

28 March: next P&C meeting (6:30pm at GPS)

1st-2nd April: Annual Book Sale (Belendi, 186 Glebe Point Road)

VOLUNTEER FOR THE BOOK SALE HERE!

Glebe

Supporting Glebe Public School

ANNUAL BOOK SALE

Sat 1 - Sun 2 April

9am - 4pm
BENLEDI

186 Glebe Point Rd,
Glebe

Donations to Benledi
Friday 31 March 9am - 12 noon

- ☒ good quality books
- ☒ damaged, outdated, mouldy
- ☒ annuals, encyclopedias, magazines

Info: 0418 271 874 | books@glebeschool.org.au



Glebe TreeHouse

A fun, free family space where little things can grow

Schools as Community Centre

Inside Glebe Public School. Please enter via Derby Place gates.

0409 835 754

Term 1 2023

MONDAY



MyTime Group
10am - 12pm

A group for parents and carers with children under 18 years who have additional needs. Free child care, activities and more.

TUESDAY

Glebe Playgroup

10am - 12pm



A Supported Playgroup for Glebe families with children 0 - 5 years.

WEDNESDAY



Bilingual Playgroup

10:30am - 12:30pm

For families who speak more than one language. children 0 - 5 years.

THURSDAY

Ngara Nanga Mai

Aboriginal Playgroup
10am - 12:30pm



0419 846 485

Drop-in Help

10am - 12pm

For Parents & Carers
Anything reading, writing & spelling

Hearing Australia
HAPEE Ears For Early Years

Back in April

FRIDAY



BABY GROUP

10am - 11:30am

A group for parents and carers and, their babies aged 0 - 18 months.

Family Workers

Because parenting is a tough gig.

We have strong referral pathways with a variety of Family Workers.

Contact us for more.



Food Support



We receive fresh fruit and pantry staples every Tuesday afternoon. Our food is stored in our Kindness Cupboard. Drop in **any day** to check it out!



9660 4549 | glebe-p.school@det.nsw.edu.au | [Find us here](#)



THE FATHERING PROJECT & GLEBE PUBLIC SCHOOL

HANDBALL TOURNAMENT AND SAUSAGE SIZZLE

FOR DADS AND DAD-FIGURES

MARCH 21 (TUESDAY WEEK 9)

5:30PM - 7PM

GLEBE PUBLIC SCHOOL PLAYGROUND

FILL OUT THE FORM HERE

(SO WE CAN ORDER ENOUGH FOOD!)



ATTENDANCE!

WHY ATTENDANCE MATTERS

When your child misses school they miss important opportunities to...

On time school attendance is vital to students success at school. We understand that at times things happen which cannot be controlled and students may be late. Students who arrive after 9:00 am are to go to the school office on arrival and receive a late note. The reason for the late arrival is recorded and we ask that parents/carers please let the school know the reason, for example 'student attended a medical appointment'. When there is no reason provided, the late arrival is recorded as unexplained. Late arrivals are closely monitored by the school executive as part of our attendance procedures.

Please refer to the 'Compulsory School Attendance - information for parents' guidelines from the Department of Education by clicking [here](#)



Minutes lost = days lost per year

A couple of minutes here and there doesn't seem like much, but...

When your child misses just...

they miss days per year

5 mins
per day



=

3 days



30 mins
per day



=

18 days



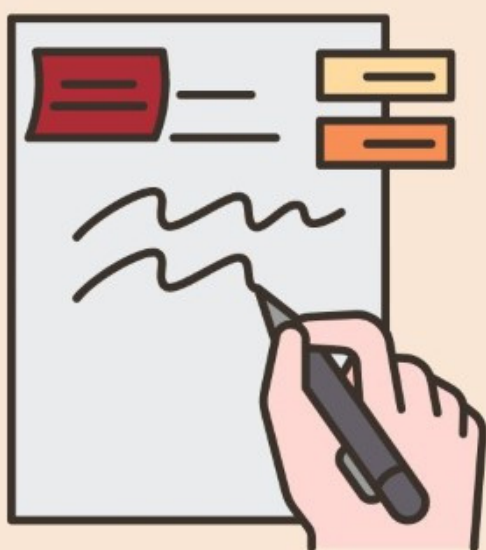
Patterns of lateness
can have a serious
impact on your child's
education.



DROP IN HELP

See Vanessa or Isabel for help with
forms or anything
reading, writing and spelling.

For Parents & Carers



Thursdays, 10am - 12pm

At the Glebe TreeHouse

Inside Glebe Public School. 0409 835 754

TAFENSW



Glebe
TreeHouse

Reading Writing **Hotline**
1300 6 555 06



A free national referral service for adults.

DRAMA SCENE

DRAMA CLUB AT GLEBE

TRIAL SPOTS AVAILABLE

KINDERGARTEN UP TO YEAR 6

Tuesdays After School 3.00pm - 4.10pm

After Drama Scene students may be picked up or go to Centipede



Enrol Easily On Website

www.dramascene.com.au

WHATSAPP Steph 0407 235 914



Hilda Booler Kindergarten

Our preschools offer education and care for children aged 3 to 5 years.

Qualified and experienced educators place a strong focus on quality interactions and learning. We facilitate learning through a play-based program.

The centre offers spacious indoor areas with a sun safe outdoor play area. Our programs provide opportunities for all children to flourish and meet their full potential through a range of educational experiences.

We pride ourselves on building meaningful relationships with children and their families.

Monday to Friday
8:30am to 4pm
We close for five weeks over Christmas and New Year.

Enrolment priorities

Preschool aged children, aged 3 to 5 years, in one or more of the following categories:

- from low-income families (with a health care card)
- Aboriginal or Torres Strait Islander
- with English language needs
- with disability
- with additional needs.

Register your interest, positions are limited.

For more information
Hilda Booler Kindergarten
Jubilee Park, Eglinton Road, Glebe
02 9265 9033
hbk@cityofsydney.nsw.gov.au
city.sydney/hbk

CITY OF SYDNEY

AFTER SCHOOL ART 2023



Art classes for students in Years 3 to 6
Drawing, painting, sculpture, printmaking and more
Creative Kids vouchers accepted

ENROL NOW! Contact Catriona
0404 677 245 cat.secker@outlook.com
www.arty-cats.com



Sing your heart out ... with
Glebe Singers!

We're a community choir, very fortunate to have a local professional music director, Liz Lecoanet (also a singing coach & international performer).

First visit is FREE

Everyone is welcome. No audition needed.

Want more info?

E: Merren - merrensmith@hotmail.com

F: facebook.com/glebecommunitysingers

Next term dates

From 2 February 2023 for 9 weeks

April School Holiday Activities

COST: \$70 Mixed day Activities
Parkour intensive \$70
Gymnastics intensive \$170 for a 2 day workshop
Time: 8:30-4pm

BOOK NOW



Additional Info: Label all personal belongings. Please bring a packed lunch, water bottle and wear enclosed shoes with socks

Tues 11th	Gymnastics, Basketball, Arts & Crafts, Dance Games, Gymnastics beginner intensive day 1
Wed 12th	Cricket, Science, Hockey, Cheerleading, Gymnastics beginner intensive day 2
Thur 13th	Laser Tag, Minute to win it, Parkour, Bowling, Gymnastics Beginner day 1
Fri 14th	Mini Olympics, Cooking, Gymnastics, Boxing, Gymnastics Beginner day 2
Sat 15th	Parkour Beginner Intensive
Mon 17th	Gymnastics, Science, Basketball, Minute to win it, Gymnastics Intermediate intensive day 1
Tues 18th	Laser Tag, Cricket, Arts & Crafts, Bowling, Gymnastics Intermediate intensive day 2
Wed 19th	Dance Games, Cooking, Boxing, Cheerleading, Parkour Intermediate Intensive
Thur 20th	Parkour, Oz Tag, Soccer, Gardening, Gymnastics beginner intensive day 1
Fri 21st	Mini Olympics, Laser Tag, Science, Hockey, Gymnastics Beginner Intensive day 2
Mon 24th	Minute to win it, hockey, Laser Tag, Arts & Crafts

CONTACT US: Phone: 0296602557

Email: glebelehardt@pcycnsw.org.au

PCYC | GLEBE LEICHHARDT

IS LIFE CHANGING



COLOURED BY YOU COMPETITION

COLOUR OUR NEXT TOTE BAG & WIN \$100 OF GROCERIES ON US



26 TO BE WON. A WINNER WILL BE PICKED FOR EACH STORE AS VOTED BY OUR LOCAL FRIENDS OF THE FARM.

GRAB YOUR ENTRY FORM AT THE REGISTERS OR SCAN THE QR CODE FOR ONLINE ENTRY DETAILS.

Competition starts 14/02/23 & ends 12/03/23. Limited to 1 entry per person. Entries must be below the competition theme and specifications and be submitted and finished with coloured markers. Initial judging process will be conducted by Regatta Farm Markets on 20/02/23. The winner will be responsible for selecting drawing entries and making them available online for voting by Regatta Farm Friends of the Farm customers to choose 26 winners (one per store). Selected entries will be displayed on our 24hr and social channels on 20/02/23 and winners announced on 24/02/23. Prizes are a \$100 grocery voucher. By 14/03/23. 75 000 040 704 of Worthhouse, Sydney Markets, Harrington NSW 2023 Full T&Cs on harrington.com.au/coloured-by-you



GLEBE PUBLIC SCHOOL

SOCCER X SCHOOL PROGRAM / FUN - EDUCATIONAL - ACTIVE

Starting in Term 1, Soccer X will be running a 9 Week Soccer program at Glebe Public School every **Wednesday from 3:05pm - 4:05pm beginning February 8th.**

The program is available to students from **Kindy - Year 6**. Children will be split into groups according to age. All sessions will be run by **qualified coaches** who hold WWCC. The sessions will be **fully inclusive & fun-based**, catering for all abilities.

Cost: \$140 / 9-weeks. **Active Kids Vouchers Accepted**
For more information and online registrations please visit
www.soccer-x.com Contact: abyr@soccer-x.com / 0420 873 317



GLEBE JUNIOR HOCKEY

GLEBE JHC
90 YEARS STRONG IN OUR COMMUNITY

REGISTER NOW TO PLAY IN 2023!

**MIXED TEAMS
AGES 4 - 17
ALL ABILITIES
DEVELOPMENT FOCUS
ACCREDITED COACHES**



Enrol now: www.glebehockey.org.au
Enquiries: glebejuniorhockey@gmail.com
@glebehockey