

GLEBE MATTERS



Principal's Address

Dear Parents and Families

It has been a busy two weeks at Glebe Public School!

Multicultural Community Night

This week, we hosted our first Multicultural Community Night in many years, and it was fantastic! We enjoyed an abundance of international cuisine and engaging cultural performances from several families. The atmosphere was vibrant, and it was heartwarming to see everyone come together. A special thank you to Mrs. Marks (English as an Additional Language/Dialect Teacher) and Mr. Wheatly for organizing and coordinating the event, to our supportive staff who attended, and to our amazing community for sharing their rich cultural backgrounds.

Collaborative Planning Days

This week, all teaching staff took part in collaborative planning days to prepare for Term 3. These days, held at the end of each term, provide an opportunity for teachers to engage in professional discussions to evaluate, refine, and develop high-quality teaching and learning programs for their students. These days are guided by our Assistant Principals and the Assistant Principal of Curriculum and Instruction.

Student Reports

Semester One student reports will be sent home next week, and I want to acknowledge the time, effort and dedication from our staff in writing the reports. When reviewing the reports, it is evident that our staff know their students extremely well and are providing tailored and explicit opportunities to meet their individual needs.

Explaining Student Absences

There has been an improvement in parents and families providing the school with explanations for student absences, but there is still work to be done. If your child arrives late or is absent from school for a whole day, you **MUST** provide the school with an explanation. You can advise the school of your child's absence/s through one of the following options:

- Calling the school on 9660 4549
- Emailing the school at glebe-p.school@det.nsw.edu.au
- Logging into the Sentral parent App and providing a reason for the absence/s
- advising the class teacher via the SeeSaw App

Have a wonderful weekend and if there is anything you need, please do not hesitate to ask.

Bryce Walker
Principal

bryce.walker@det.nsw.edu.au

THIS WEEK AT GPS...

SPELLING BEE

On Tuesday, 8 Stage 2 students and 26 Stage 3 students competed in the school final of the 2024 NSW Premiers Spelling Bee. They were given word lists of hundreds of very tricky words to learn. They showed courage and determination in standing up in front of their peers and spelling their hearts out! They correctly spelled words like "counsellor", "apprentice", "delirious" and "posterior".

The runner up for the Junior Competition was Cassidy and the winner was Iris. The winner for the Senior Competition was Silas.



WHAT'S GOING ON IN KANGAROO PAW

Kangaroo Paw got ready for NAIDOC Day next week with our "Keep the Fire Burning" play based learning on Friday.



MULTICULTURAL COMMUNITY NIGHT



UPDATES AND NOTICES

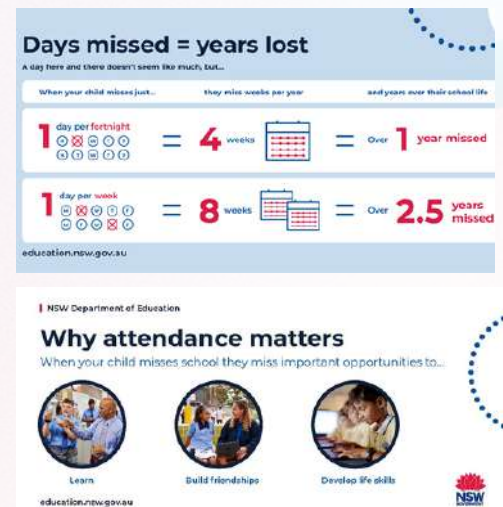
UNEXPLAINED STUDENT ABSCENCES

If your child has been absent from school this week (whole day or late arrival), you are required to provide an explanation for the absence/s.

You can advise the school of your child's absence/s through one of the following options:

- Calling the school on 9660 4549
- Emailing the school at glebe-p.school@det.nsw.edu.au
- Logging into the Sentral parent App and providing a reason for the absence/s
- advising the class teacher via the SeeSaw App

Thank you for your support in advising the school if your child is absent from school.



GLEEBOOKS - WHAT IS ON!

We have a huge month of bookish shenanigans happening throughout June, hope there is something amongst this mischief that interests and excites you.

On the 1st of June we have our Year 1/2 bookclubbers doing a Would You Rather writing and drawing session with me at 2pm, where we will make our own stories to take home.
At 3:30pm we welcome Sue Whiting to our Year 3/4 book club to do a story puzzler workshop based on her adventurous Pearly series. Sue is the Queen of adventure and storytelling, so we are very excited about this one.

Our Year 5/6 bookclubbers are also super lucky to have Deborah Abela joining us for book club to talk about her new book, The Kindness Project on June 8th at 3:30pm. Deb is so full of energy and has the ability to inspire all ages with her wit and wisdom. All bookclubbers are welcome to attend this session.

DOGS AT SCHOOL

No dogs are permitted to be on school grounds, including in the car park. Thank you families for your ongoing commitment to this.

STAYING SAFE ON THE ROADS

Lots of our students enjoy riding their bike or scooter and playing in local parks after school. However, over the recent weeks, I have noticed an increase in the number of students who are not doing so safely. Specifically, not wearing helmets, not using pedestrian crossings, riding or walking when it is dark, running onto the road without looking for cars, and riding a bike or scooter in traffic. This is concerning.

Although we promote and teach road safety as part of the curriculum and general safety for our students, and these messages will be shared with students again, I am asking that you please reiterate the importance of road safety with your children. General information for parents and carers can be accessed through the [Department's parent and carer hub](#) and I ask that you refer specifically to the information about [travelling safely to and from school on a bike or scooter](#)

APPS AT GPS



School Bytes



Sentral



SeeSaw

What?

- Manage/pay school fees and school events

Who provides access?

- Office staff

What?

- Submit attendance

Who provides access?

- Office staff

What?

- communicate with the classroom teacher

Who provides access?

- Classroom teacher

URGENT CALL OUT FOR SECOND HAND UNIFORMS

If you have any spare, or old uniforms please hand them into the front office as we are running low on second hand uniform stock.



GLEBE P & C

**SAVE
THE DATE**

Don't forget our partnership with Matt Carvalho/Ray White!

- The P&C gets **\$1,500** for every referral Matt receives for property sales from the GPS community
- If you know someone selling property, please refer them to Matt Carvalho and mention GPS!



P & C Meetings for Term 3

- **13th August, 7pm**
- **10th September, 7pm**

All welcome!!!

**JOIN
US!**



SAVE THE DATE!

**Saturday 14th September, 7pm -
Forest Lodge Hotel**

Last year's Trivia night raised **\$9,000** and was a fun parents night out!
Tickets on sale Term 3.

1. Join your child's class What's App group
2. Follow 'Glebe P&C' on Facebook
3. Join the next P&C meeting - (just twice a term) - we want to hear your voice!

CONTACTING THE SCHOOL

The staff at Glebe Public School are committed to supporting all aspects of your child's education and are willing to assist in any way that they can. We ask that you assist us to maintain effective communication by following the processes outlined below when communicating with staff.

- Email teachers and/or executive staff of any requests or concerns.
- Appointments to see a staff member should be made by email, phone or in person.
- Please do not make unannounced and non-urgent requests to see staff, especially during busy times (e.g. assemblies, morning drop-off and home time).
- Please expect a two day turnaround response to the appointment request.
- The teacher is the first point of contact (not the Principal), then the stage supervisor for more complex issues.
- The teacher and/or the stage supervisor may ask for time to refer to the Principal or other relevant staff for advice.

The school also provides information to families through the School Bytes App, the school newsletter Glebe Matters, and the school Facebook and Twitter pages. Additionally, all classes use SeeSaw to share and communicate class learning and events.

Your child's class Parent Representative is another great contact for further communication between home and school.

The supervisors for each stage are:



Early Stage 1 and
Stage 1 Assistant
Principal (K-2)
Ms Dominique
Chedel



Relieving Assistant
Principal (K-2)
Ms India Evans



Stage 2 and 3
Assistant Principal
(Years 3 - 6)
Miss Karissa Pedron



Assistant Principal
Curriculum and
Instruction (Year 3-6)
Mr Todd Mackie



Deputy Principal
Instructional Leader
Aboriginal
Education
Ms Rondelle Ryan

Thank you for your cooperation and understanding

CENTIPEDE:

gl ɪ | eɪ | eɪ | ho | | the |

This week we have a new art workshop starting on Tuesday afternoon run by a qualified art therapist. Next term we'll be running these activities with external providers in the afternoons. Come along and find a new hobby!

Monday: Cooking
Tuesday: Art workshop
Wednesday: Sydney Chess Academy
Thursday: Taekwondo



In the next school holidays vacation care will be open from Monday 8th to Friday 19th July, and also on Monday 22nd July for the staff development day. Check out our exciting program! Vacation care opening hours are 8:00am – 5:00pm. Breakfast, lunch and snacks are all provided. Please note days booked cannot be cancelled. Please [visit our website](#) for a booking form, or pick one up at Centipede. Please book early to avoid disappointment as some days have limited availability.

During the school term, Centipede is open from 7:30 to 8:45 am before school (breakfast provided) and 3:00 to 5:45pm after school (afternoon tea provided). Families are welcome to make ongoing bookings or casual bookings at short notice, however an [enrolment form](#) is required for every child that attends Centipede. For any questions or to make a booking, please email Centipede: centipede.glebe@yahoo.com.au

Don't forget that Before School Care provides a hot breakfast every morning: scrambled eggs, baked beans, egg in a hole, french toast, etc. along with cereals and fruit. Yum!

Monday 8 July Incursion / Excursion	Tuesday 9 July Excursion	Wednesday 10 July Excursion	Thursday 11 July Incursion	Friday 12 July Excursion
K-3: Raw Art Workshop Have fun working with a range of 2D media to create a funky mixed media cupcake full of colour. And we'll bake some to eat too! Incursion time: 10.30am-12pm 4-6: Sydney Puzzle Trail Fancy yourself as a detective? Whodunit and with what weapon? Spot and solve clues as we unravel a devilish mystery walking around The Rocks. Excursion time: 10.00am-3pm	Ice Zoo  Join us for a cool excursion to Ice Zoo. We will be learning how to skate and showing off our moves on the ice. Depart 11.00am Return 2.30pm	K-3: Picnic in the Park We'll make our own picnic lunch to take to Wentworth Park. Walking there & back, saving plenty of energy for the fabulous play equipment. Depart 11.30am Return 2.30pm 4-6: Glebe Youth Centre Wander down to the Youthie for a movie, basketball, game of pool and lunch. Depart 11.00am Return 2.30pm	Big Box City  Reverse Garbage will help us make a model city that is environmentally friendly out of reclaimed materials, using no sticky tape or glue! Incursion time: 10.30am-12pm	Movies  A short walk to Broadway for the movie, and lots of Minions arts, crafts & games for the rest of the day. Depart 11.30am Return 2.45pm
Monday 15 July Incursion	Tuesday 16 July Incursion / Excursion	Wednesday 17 July Excursion	Thursday 18 July Excursion	Friday 19 July Excursion
Peddle Go Karts  Ready, set, go! Fun and excitement racing around the Centipede circuit. Incursion time : 10am-2pm	K-3: Clay Play Roll up your sleeves and dive into creating indigenous animals & tools with Kirra from the Bundjalung Nation of the Tweed region. Incursion time: 1.30pm-3pm 4-6: Sydney Explorer Exciting adventures travelling Sydney by bus, train, ferry & light rail including a delicious lunch. Depart 10am Return 3pm	Stardust Circus  Hilarious clowns, dogs, ponies, incredible aerial performances, there are definitely no dull moments at Stardust Circus! Depart 9.30am Return 3pm	Movies  Another visit to the movies! This time we're going to see INSIDE OUT 2 @ Broadway. Depart 11.30am Return 2.45pm	Naidoc Orienteering  An adventure navigating through an orienteering course at Middle Head and learning about traditional life of the Gai-mariagal people. Depart 9.30am Return 3pm

Monday 22 July
Excursion

Our Big Kitchen



A fantastic day out learning about cooking and healthy eating habits, and bake bread, cookies and other foods to help people in the community.
Depart 9.30am Return 3pm

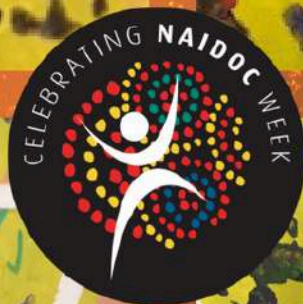
dl dr oos onr

b

b

b

m



KEEP THE FIRE BLAK, LOUD & PROUD! BURNING

COMMUNITY DAY Friday 5th July 11am - 2pm Glebe Public School

SCARRED TREE Family Day Saturday 6th July 2pm - 5pm St Johns House/Scarred Tree

GYS COROBOREE SPORTS DAY Tuesday 9th July 12pm-3pm Wentworth Park

BROADWAY PHOTOGRAPHY EXHIBITION & Boomalli POP-UP SHOP Broadway Shopping Centre



GLEBE NAIDOC 2024



For more event details follow us on
our social media page.





Glebe TreeHouse

A fun, free family space where little things can grow!

Schools as Community Centre- Inside Glebe Public School. Please enter via Derby Place gates.

**Term 2,
2024**

facebook.com/GlebeTreehouse

0409 835 754

MONDAY



MyTime Group

10am - 12pm

A support group for parents/ carers with children 0 - 18 with additional needs.

*Free child minding & morning tea



Music Playgroup

10.30-11.30

A NEW music program for toddlers in Glebe Public School's music space.

TUESDAY

General Playgroup

10am - 12pm



A Supported Playgroup for Glebe families with children aged 0- 4.

*activities + snacks provided

Kindness Cupboard



Help yourself to FREE food items, clothing, books & toys. Take what you need or leave what you can.

WEDNESDAY

Glebe School Bus

A morning school bus service for Glebe Public School students who struggle to get to school on time. Monday - Friday.



Dolly Parton's Imagination Library!

A FREE monthly book delivery where Treehouse children receive books from birth to 5.



THURSDAY

Ngara Nanga Mai

SDN Aboriginal Playgroup

10am - 1pm



Aunty Tania 0419 846 485

Drop-in Help

10am - 12pm



For help with admin tasks application forms, reading, writing, spelling, computers.

Adam & Vanessa EORA TAFE

FRIDAY



BABY GROUP

10am - 11.30am

Baby play group for parents and carers and their babies aged 0 - 18 months.



NEST (from 26 July!)

An 8 week parent cooking program by Oz Harvest

LIMITED numbers and enrolment necessary to participate. See Helen for more info/ sign up.

POLYmath TUTORING

Maths Group Tutoring
Years K - 6



Maths Tutoring Term 3, 2024

Glebe Public School - Bookings Open Soon

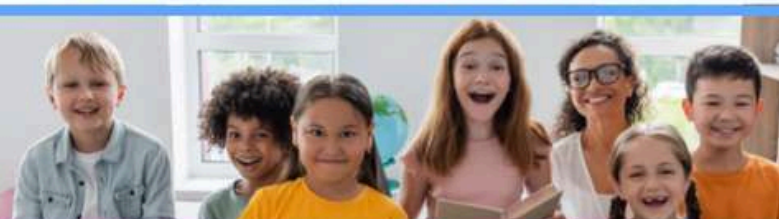
FRI 7:45 - 8:45 AM

Nearby Location

Ultimo Public School MON 3:15 - 4:15 PM | 4:20 - 5:20 PM

FRI 3:15 - 4:45 PM (1.5 hour class)

- ➔ Maths Curriculum
- ➔ Weekly Homework
- ➔ Extend & Accelerate
- ➔ OC Test Prep
- ➔ Selective Test Prep
- ➔ NAPLAN



sports for better minds

Glebe Public School



sports X

TERM 1

SCHOOL

programs



In Term 1 2024, Sports X will be running the following After School Sports Program at Glebe Public School:

Sports X is running a Free Trial for a Week
(Late inclusions welcomed)

Basketball X -- Every Monday | 3.05 - 4.05pm | 8 weeks | \$135 (Starting February 19th)

Soccer X -- Every Wednesday | 3.05 - 4.05pm | 8 weeks | \$135 (Starting February 21st)

Active Kids Vouchers accepted

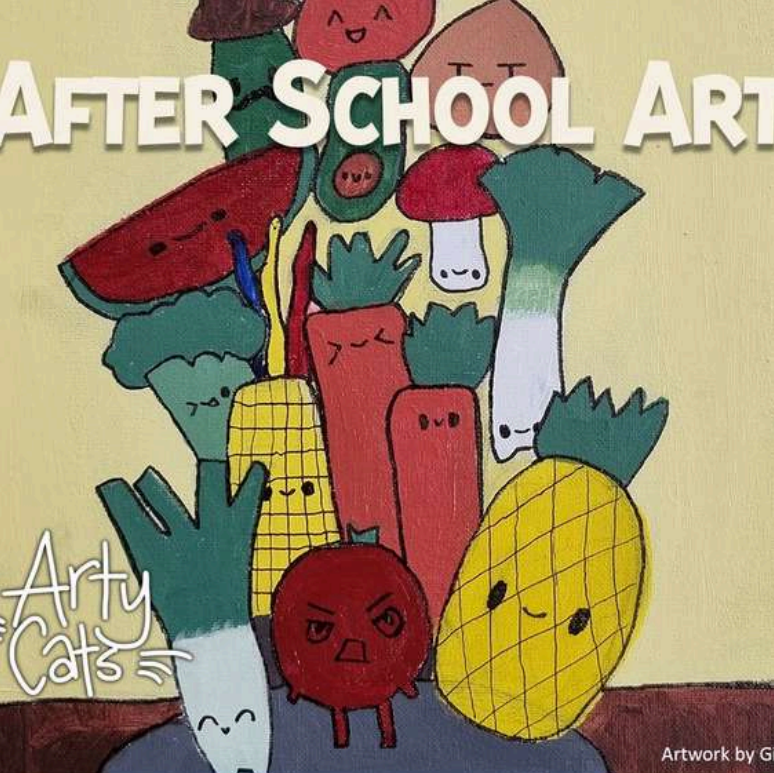
The programs are available to students from Kindy - Year 6.

On arrival children will be split into groups according to age.

Fully inclusive & fun-based, catering for all abilities.

All sessions will be run by qualified coaches who hold Working With Children Checks.

For more information and online registrations please visit www.sports-x.com.au. Please contact us via email for further enquiries: lireland@sports-x.com.au



Art classes for students in Years 3 to 6
Drawing, painting, sculpture,
printmaking and more

Classes run at school Thursdays 3 - 4:30 pm
\$260 for 10 week term

ENROL NOW! Contact Catriona
0404 677 245 cat.secker@outlook.com

FREE TRIAL CLASS! DRAMA CLUB

ALL AGES



HERE AT SCHOOL
TUESDAYS
3.00pm-4.10pm



dramascene.com.au

WHATSAPP Steph questions +61 0407 235 914

EMAIL STEPH: mychild@dramascene.com.au

THE MAKERS + SHAKERS MARKET

White Bay Cruise Terminal
Rozelle

Australian handmade homewares +
fashion + food + drink + free parking



10am - 4pm • \$5 Entry • Kids Free
Get your tickets from
themakersandshakers.com.au



MANEEMA MUAYTHAI

FREE KIDS CLASS

5 WAYS MUAY THAI CAN BENEFIT
YOUR KIDS!

- ✓ BE BULLY-PROOF
- ✓ LEARN SELF DEFENSE
- ✓ INCREASE CONFIDENCE
- ✓ KEEP FIT & ACTIVE
- ✓ LEARN DISCIPLINE

WHEN: EVERY SATURDAY
TIME: 10AM - 10.45AM
WHERE: LVL 1, 105 PARRAMATTA RD CAMPERDOWN
COST: FREE (FIRST CLASS ONLY)
WHAT TO BRING: YOUR KIDS!
AGE REQUIREMENT: 6-14 YEARS OLD



HELLO@MAMUAYTHAI.COM.AU
0422 191 468



School Holiday Art Workshops!



Come along and join our fun, creative holiday workshop!

Age: 5-13 years old

15-19th July 2024

More details can be found at:

www.nydneyvisualartsacademy.com



D-N-Y NEWTOWN

FAMILY SAVER OFFER

\$6*

KIDS TICKETS

FOR CLUB DENDY MEMBERS

\$8*

KIDS TICKETS

FOR NON-MEMBERS

MONDAY JULY 1 - FRIDAY JULY 19

*ONLY VALID FOR DESPICABLE ME 4 & INSIDE OUT 2 SESSIONS
MONDAY - FRIDAY BEFORE 5PM

Booking Fees Apply for online bookings. Not valid for special events, or in conjunction with any other offer. Kids tickets are applicable for children 14 years and under. Offer ends July 19th.



REDFERN SCHOOL HOLIDAY BASKETBALL CAMP

NCIE

8-11 JULY

AGES 5-14

JUNIORBASKETBALLACADEMY.COM.AU



POLYmath TUTORING

*Maths Group Tutoring
Years K - 6*



Maths Tutoring Term 3, 2024

Glebe Public School - Bookings Open Soon

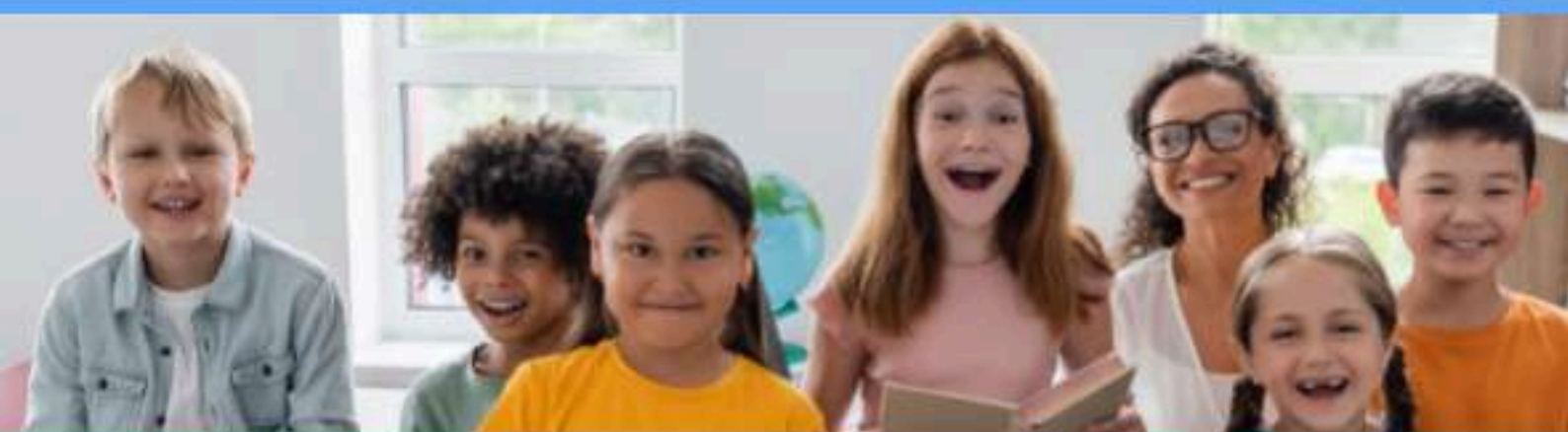
FRI 7:45 - 8:45 AM

Nearby Location

Ultimo Public School MON 3:15 - 4:15 PM | 4:20 - 5:20 PM

FRI 3:15 - 4:45 PM (1.5 hour class)

- | | |
|-----------------------|-----------------------|
| ➡ Maths Curriculum | ➡ OC Test Prep |
| ➡ Weekly Homework | ➡ Selective Test Prep |
| ➡ Extend & Accelerate | ➡ NAPLAN |



Developed by Elly BSc(AdvMath)(Hons 1 in Statistics)/ B Arts (English)
elly@polymathtutoring.com.au | (02) 9072 1368



NAIDOC

Family Fun Day

FREE EVENT

Wed 10 July 2024

10am - 2pm

PCYC Marrickville

Cultural performances | Free BBQ | Elder's tent | Arts & crafts
Games & prizes | Jumping castle | Face painting | Free food



Keep the fire burning! Blak, loud & proud



National Indigenous
Australians Agency



Australian Government
National Indigenous Australians Agency